



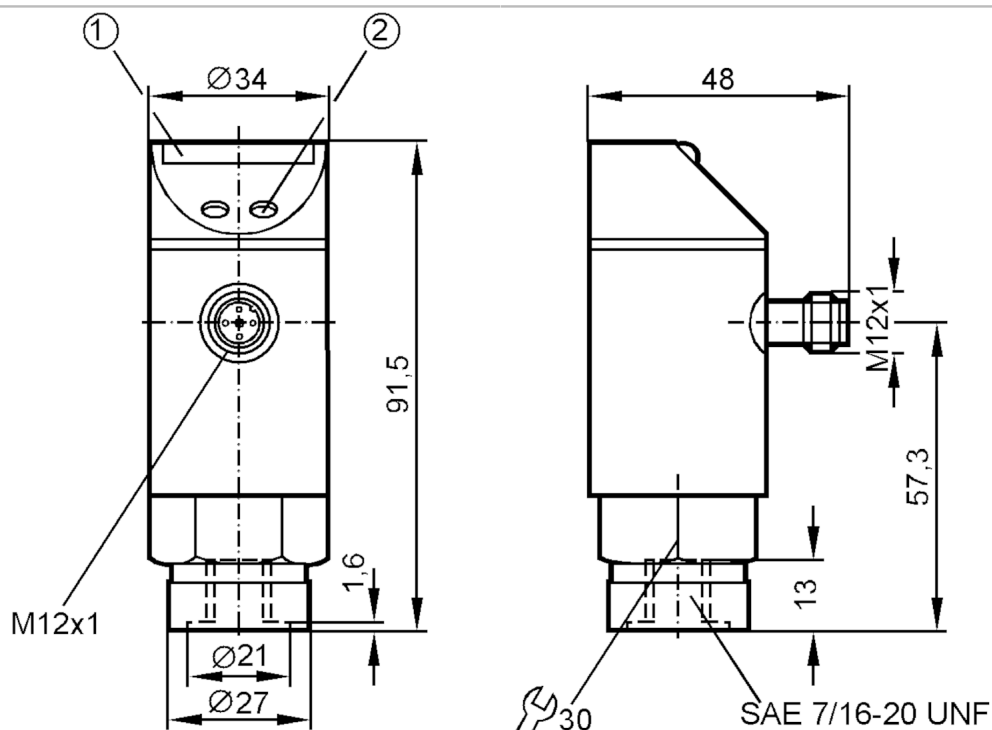
## Pressure sensor with LED bar display

PB-040PSBU76-HFPKG/US/ IV

Article no longer available - archive entry

Alternative articles: PN7303

When selecting an alternative article and accessories please note that technical data may differ!



- 1 LED bar display  
2 programming button



## Product characteristics

Number of inputs and outputs	Number of digital outputs: 1
Measuring range [psi]	0...400
Process connection	threaded connection 7/16" - 20 UNF internal thread

## Application

Special feature	Gold-plated contacts
Application	for industrial applications
Media	liquids and gases
Medium temperature [°C]	-25...80
Min. bursting pressure [psi]	5075
Pressure rating [psi]	1500
Type of pressure	relative pressure

## Electrical data

Operating voltage [V]	18...30 DC
Current consumption [mA]	< 50
Min. insulation resistance [MΩ]	100; (500 V DC)
Protection class	III
Reverse polarity protection	yes



## Pressure sensor with LED bar display

PB-040PSBU76-HFPKG/US/ IV

Power-on delay time	[s]	0.2
Integrated watchdog		yes
<b>Inputs / outputs</b>		
Number of inputs and outputs		Number of digital outputs: 1
<b>Outputs</b>		
Total number of outputs		1
Output signal		switching signal
Electrical design		PNP
Number of digital outputs		1
Output function		normally open / normally closed; (parameterisable)
Max. voltage drop switching output DC	[V]	2
Permanent current rating of switching output DC	[mA]	250
Switching frequency DC	[Hz]	10
Short-circuit protection		yes
Type of short-circuit protection		pulsed
Overload protection		yes
<b>Measuring/setting range</b>		
Measuring range	[psi]	0...400
Set point SP	[psi]	20...400
Reset point rP	[psi]	12...392
In steps of	[psi]	4
Note on hysteresis		adjustable
<b>Accuracy / deviations</b>		
Switch point accuracy	[% of the final value]	< ± 2,0
Repeatability		
	[% of the final value]	< ± 0,25; (with temperature fluctuations < 10 K)
Temperature drift per 10 K		< ± 0.3
<b>Software / programming</b>		
Adjustment of the switch point		programming button
<b>Operating conditions</b>		
Ambient temperature	[°C]	-25...80
Storage temperature	[°C]	-40...100
Protection		IP 65
<b>Tests / approvals</b>		
EMC	EN 61000-4-2 ESD	4 kV CD / 8 kV AD
	EN 61000-4-3 HF radiated	10 V/m
	EN 61000-4-4 Burst	2 kV
	EN 61000-4-6 HF conducted	10 V
Shock resistance	DIN IEC 68-2-27	50 g (11 ms)
Vibration resistance	DIN IEC 68-2-6	20 g (10...2000 Hz)

# PB5323



## Pressure sensor with LED bar display

PB-040PSBU76-HFPKG/US/ IV

Mechanical data		
Materials	EPDM/X; FKM; NBR; PA; PBT; PC; PTFE; stainless steel (304/1.4301)	
Materials (wetted parts)	FKM; ceramics; stainless steel (303/1.4305)	
Min. pressure cycles	100 million	
Process connection	threaded connection 7/16" - 20 UNF internal thread	

Displays / operating elements		
Display	switching status	LED, yellow
	measured values	10 x LED, green Resolution 10% of the final value

Remarks		
Pack quantity	1 pcs.	

### Electrical connection

Connector: 1 x M12; coding: A; Contacts: gold-plated

