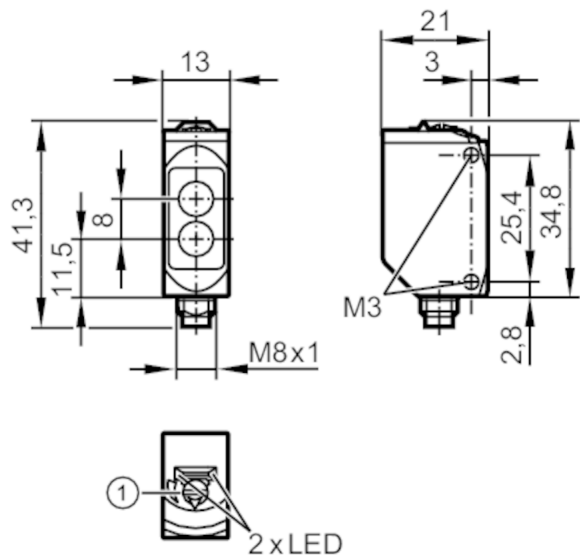


O6P310



Retro-reflective sensor

O6P-CPKG/AS/4P



- 1 potentiometer sensitivity receiver in upper lens
transmitter in lower lens



Product characteristics

| | |
|---------------|-------------|
| Type of light | red light |
| Housing | rectangular |

Application

| | |
|--------------------|-------------------------|
| Special feature | polarisation filter |
| Function principle | Retro-reflective sensor |

Electrical data

| | | |
|-----------------------------|------|--------------|
| Operating voltage | [V] | 10...30 DC |
| Current consumption | [mA] | 12; ((24 V)) |
| Protection class | | III |
| Reverse polarity protection | | yes |
| Type of light | | red light |
| Wave length | [nm] | 633 |


Outputs

| | | |
|---|------|---------------|
| Electrical design | | PNP |
| Output function | | complementary |
| Max. voltage drop switching output DC | [V] | 2.5 |
| Permanent current rating of switching output DC | [mA] | 100 |
| Switching frequency DC | [Hz] | 1000 |
| Short-circuit protection | | yes |
| Type of short-circuit protection | | pulsed |



Retro-reflective sensor

O6P-CPKG/AS/4P

| Detection zone | | |
|---|------------------|--|
| Range referred to prismatic reflector | [m] | 0.05...5; (Prismatic reflector Ø 80 E20005) |
| Range adjustable | | yes |
| Max. light spot diameter | [mm] | 150 |
| Light spot dimensions refer to | | at maximum range |
| Polarisation filter available | | yes |
| Operating conditions | | |
| Ambient temperature | [°C] | -25...80 |
| Protection | | IP 65; IP 67; IP 68; IP 69K |
| Tests / approvals | | |
| EMC | | EN 60947-5-2 |
| MTTF | [years] | 1147 |
| UL approval | | UL Approval no. E009 |
| Mechanical data | | |
| Weight | [g] | 31.7 |
| Housing | | rectangular |
| Dimensions | [mm] | 41.3 x 13 x 21 |
| Materials | | housing: stainless steel (316L/1.4404); plastics: PPSU |
| Lens material | | PMMA |
| Lens alignment | | side lens |
| Tightening torque | [Nm] | 1; (screws) |
| Displays / operating elements | | |
| Display | switching status | 1 x LED, yellow |
| | operation | 1 x LED, green |
| Remarks | | |
| Remarks | | operating voltage "supply class 2" according to cULus |
| Pack quantity | | 1 pcs. |
| Electrical connection | | |
| Connector: 1 x M8; coding: A | | |
|  | | |

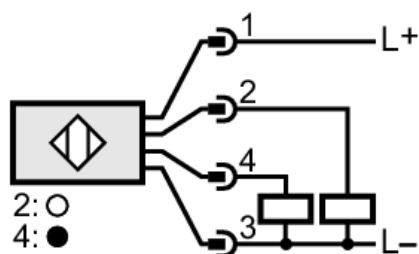
O6P310



Retro-reflective sensor

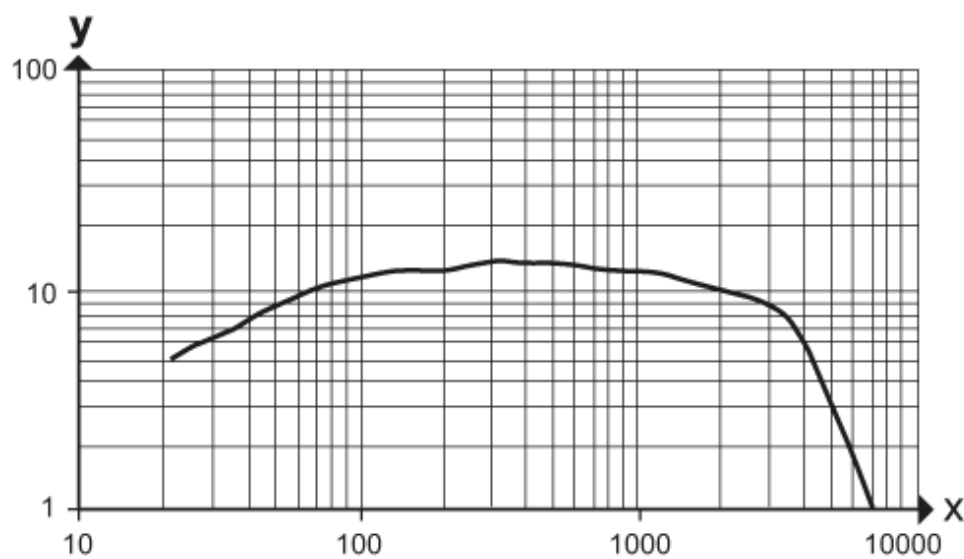
O6P-CPKG/AS/4P

Connection



Diagrams and graphs

excess gain graph



x: distance [mm]

y: excess gain factor