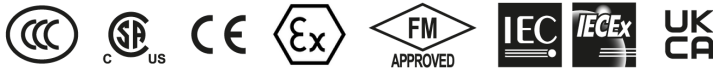
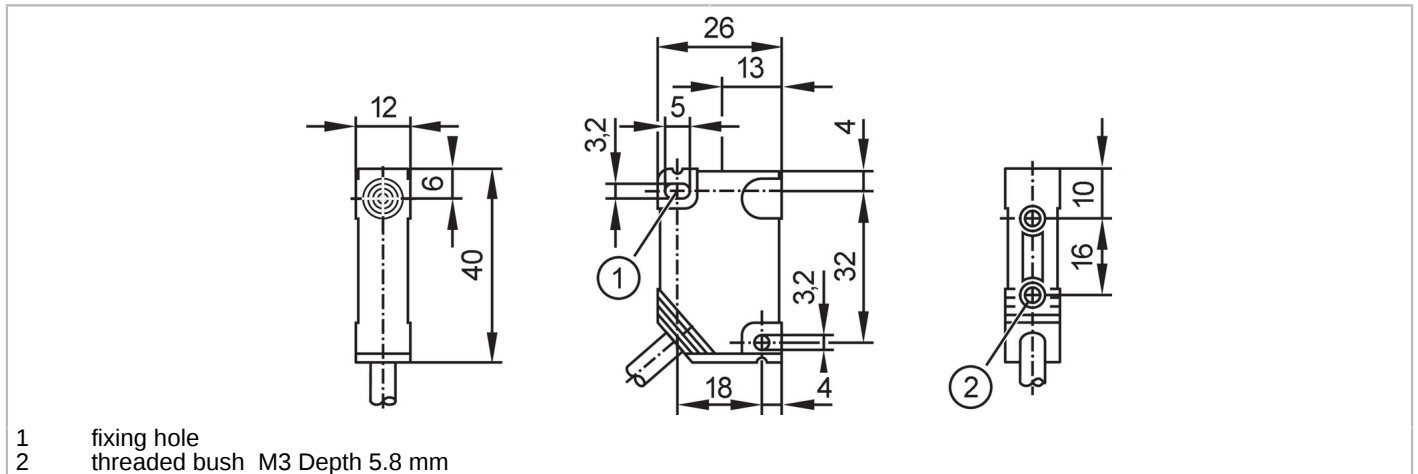


NN5001



Inductive NAMUR sensor

IN-2002-N/1D/1G/2G



Product characteristics	
Electrical design	NAMUR
Output function	normally closed
Sensing range [mm]	2
Housing	rectangular
Dimensions [mm]	40 x 12 x 26
Electrical data	
Connection to switching amplifiers	yes
Switching amplifiers	connection to certified intrinsically safe circuits with the max. values: U = 15 V / I = 50 mA / P = 120 mW
Nominal voltage DC [V]	8.2; (1kΩ)
Supply voltage DC [V]	7.5...30; (when used outside the hazardous area)
Current consumption [mA]	< 1; (disabled; conductive: > 2,1)
Protection class	II
Outputs	
Electrical design	NAMUR
Output function	normally closed
Permanent current rating of switching output DC [mA]	30; (when used outside the hazardous area)
Switching frequency DC [Hz]	800
Detection zone	
Sensing range [mm]	2
Real sensing range Sr [mm]	2 ± 10 %
Accuracy / deviations	
Correction factor	steel: 1 / stainless steel: 0.7 / brass: 0.5 / aluminium: 0.4 / copper: 0.3
Hysteresis [% of Sr]	1...15
Switch point drift [% of Sr]	-10...10
Operating conditions	
Ambient temperature [°C]	-20...80

NN5001



Inductive NAMUR sensor

IN-2002-N/1D/1G/2G

Protection	IP 67
------------	-------

Tests / approvals

Approval	PTB 01 ATEX 2191; BVS 04 ATEX E153; IECEx BVS 06.0003
----------	---

ATEX marking	II 1G Ex ia IIB T6 Ga
--------------	-----------------------

	II 2G Ex ia IIC T6 Gb
--	-----------------------

	II 1D Ex ia IIIC T 90°C Da
--	----------------------------

EMC	EN 60947-5-6
-----	--------------

Shock/vibration resistance	30 g (11 ms) / 10-55 Hz (1 mm)
----------------------------	--------------------------------

MTTF [years]	4899
--------------	------

Safety classification

Max. internal capacitance [nF]	110
--------------------------------	-----

Max. internal inductance [μH]	135
-------------------------------	-----

Mechanical data

Weight [g]	147
------------	-----

Housing	rectangular
---------	-------------

Mounting	flush mountable
----------	-----------------

Dimensions [mm]	40 x 12 x 26
-----------------	--------------

Materials	housing: PBT
-----------	--------------

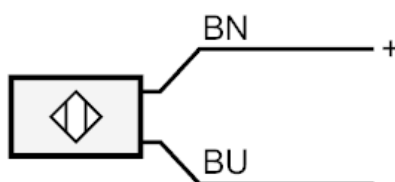
Remarks

Pack quantity	1 pcs.
---------------	--------

Electrical connection

Cable: 2 m, PVC; 2 x 0.5 mm²

Connection



BN = Core colours : brown
BU = blue