

MK5017



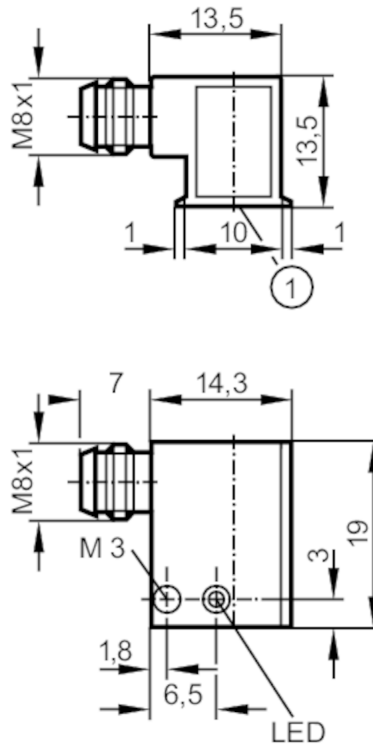
T-slot cylinder sensor

MKT3000-BPKG/AS-510-TPS

Article no longer available - archive entry

Alternative articles: MK5106 + E11796

When selecting an alternative article and accessories please note that technical data may differ!



1 Sensing face



Product characteristics

Electrical design	PNP
Output function	normally open
Dimensions [mm]	14 x 12 x 19

Electrical data

Operating voltage [V]	10...30 DC
Current consumption [mA]	< 10
Reverse polarity protection	yes
Max. power-on delay time [ms]	2

Outputs

Electrical design	PNP
Output function	normally open
Max. voltage drop switching output DC [V]	2
Permanent current rating of switching output DC [mA]	300
Switching frequency DC [Hz]	5000

MK5017



T-slot cylinder sensor

MKT3000-BPKG/AS-510-TPS

Short-circuit protection	yes
Type of short-circuit protection	pulsed
Overload protection	yes

Detection zone

Response sensitivity [mT]	2
Travel speed [m/s]	< 5

Accuracy / deviations

Hysteresis [mm]	1
Repeatability [mm]	0.1

Operating conditions

Ambient temperature [°C]	-25...75
Protection	IP 67

Tests / approvals

EMC	EN 60947-5-2
Shock/vibration resistance	30 g (11 ms) / 10-55 Hz (1 mm)

Mechanical data

Sensing face	front
Cylinder type	trapezoidal slot cylinders
Dimensions [mm]	14 x 12 x 19
Materials	aluminium; plastics

Displays / operating elements

Display	switching status	1 x LED, yellow
---------	------------------	-----------------

Remarks

Pack quantity	1 pcs.
---------------	--------

Electrical connection - plug

Connector: 1 x M8; coding: A



MK5017

T-slot cylinder sensor

MKT3000-BPKG/AS-510-TPS



Connection

