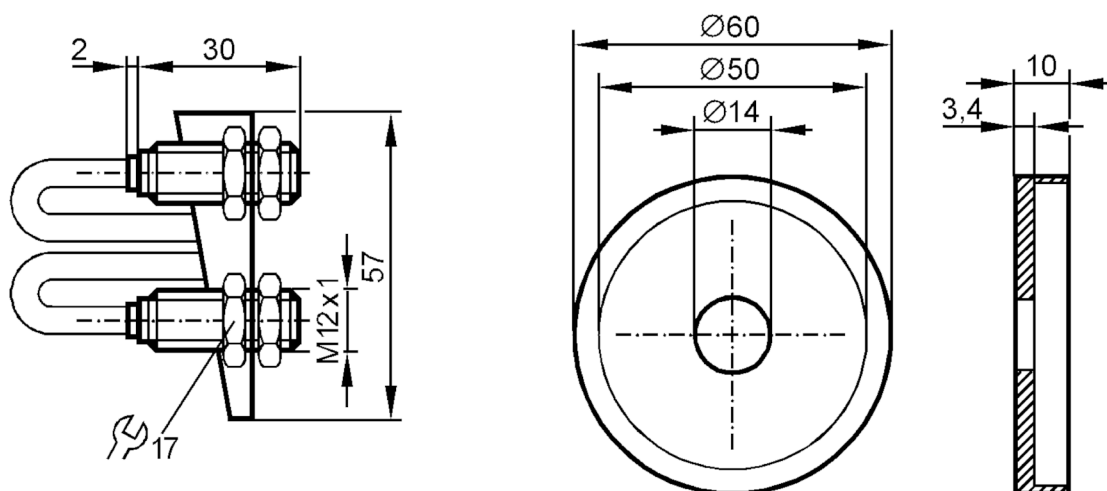


Inductive sensor

IF-04-N US-D-L

Article no longer available - archive entry



Product characteristics

| | | |
|-----------------|------|-----------------|
| Output function | | normally closed |
| Sensing range | [mm] | 4 |
| Housing | | threaded type |
| Dimensions | [mm] | M12 x 1 |

Application

| | | |
|-----------------|--|--|
| Special feature | | Gold-plated contacts |
| Application | | not for use in hazardous areas (not ATEX approved) |
| Installation | | for valves; (76...101,6 (NW 80...100)) |

Electrical data

| | | |
|------------------------------------|------|--|
| Connection to switching amplifiers | | yes |
| Switching amplifiers | | connection to switching amplifiers according to EN 60947-5-6 |
| Nominal voltage DC | [V] | 8.2; (1kΩ) |
| Supply voltage DC | [V] | 7.5...30 |
| Current consumption | [mA] | undamped: > 2,1; damped: < 1; per sensor |
| Protection class | | II |

Outputs

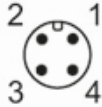
| | | |
|---|------|------------------|
| Output function | | normally closed |
| Permanent current rating of switching output DC | [mA] | 30; (per sensor) |
| Switching frequency DC | [Hz] | 1500 |

IF7038



Inductive sensor

IF-04-N US-D-L

| Detection zone | | |
|---|--------------|--|
| Sensing range | [mm] | 4 |
| Operating conditions | | |
| Ambient temperature | [°C] | -20...70 |
| Protection | | IP 67 |
| Tests / approvals | | |
| EMC | EN 60947-5-2 | |
| | EN 55011 | class B |
| Mechanical data | | |
| Weight | [g] | 0.001 |
| Housing | | threaded type |
| Mounting | | non-flush mountable |
| Dimensions | [mm] | M12 x 1 |
| Thread designation | | M12 x 1 |
| Materials | | PBT; Target: stainless steel (1.4301 / 304) |
| Accessories | | |
| Items supplied | | lock nuts: 2 |
| | | Target |
| Remarks | | |
| Remarks | | Note: |
| | | The sensors are adjusted with the enclosed target flag. |
| | | If an older type of target flag is used, there is a risk of mechanical damage to the sensor if they are not adjusted properly. |
| Pack quantity | | 1 pcs. |
| Electrical connection - plug | | |
| Connector: 1 x M12; coding: A; Contacts: gold-plated | | |
|  | | |

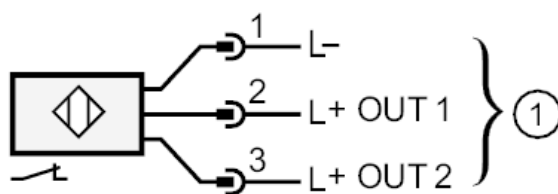
IF7038



Inductive sensor

IF-04-N US-D-L

Connection



| | |
|-----|------------------------------------|
| 1 | Connection to switching amplifiers |
| 1-2 | High, out1 |
| 1-3 | Low, out 2 |