

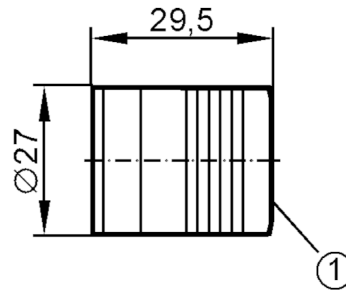
# E40125



## Welding adapter for process sensors

MOUNTINGMUF SAM16 V4A

Article no longer available - archive entry



1 internal thread M16 x 1.5

### Tests / approvals

Pressure Equipment Directive

A possible classification to PED depends on the application and has to be carried out by the user / operator.

Safety instructions

The compatibility between medium and product material has to be checked in all applications.

### Mechanical data

Weight

[g]

86.4

Materials

stainless steel (316Ti/1.4571)

### Remarks

Pack quantity

1 pcs.