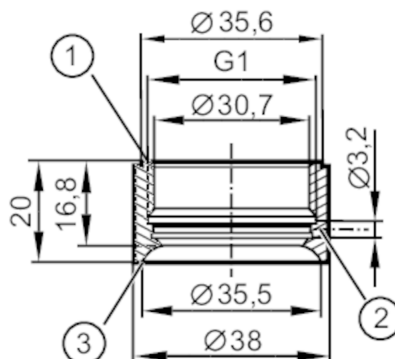




Welding adapter for process sensors

WELDING ASEPTO ADAPT D38/G1



- 1 Aseptoflex Vario
- 2 Leakage port
- 3 sealing area

Application

| | |
|-------------------------|---|
| Design | with leakage port, for installation of LDL20x |
| Pressure rating [bar] | 50 |
| Note on pressure rating | for the connection sensor - adapter |

Tests / approvals

| | |
|------------------------------|---|
| Pressure Equipment Directive | A possible classification to PED depends on the application and has to be carried out by the user / operator. |
| Safety instructions | The compatibility between medium and product material has to be checked in all applications. |

Mechanical data

| | |
|--------------------------|---|
| Weight [g] | 113.8 |
| Materials (wetted parts) | stainless steel (316L/1.4435) ; surface characteristics : Ra<0,4 / Rz 4 |
| Sensor connection | G 1 Aseptoflex Vario |
| Process connection | welding adapter Ø 38 mm |

Remarks

| | |
|---------------|--------|
| Pack quantity | 1 pcs. |
|---------------|--------|