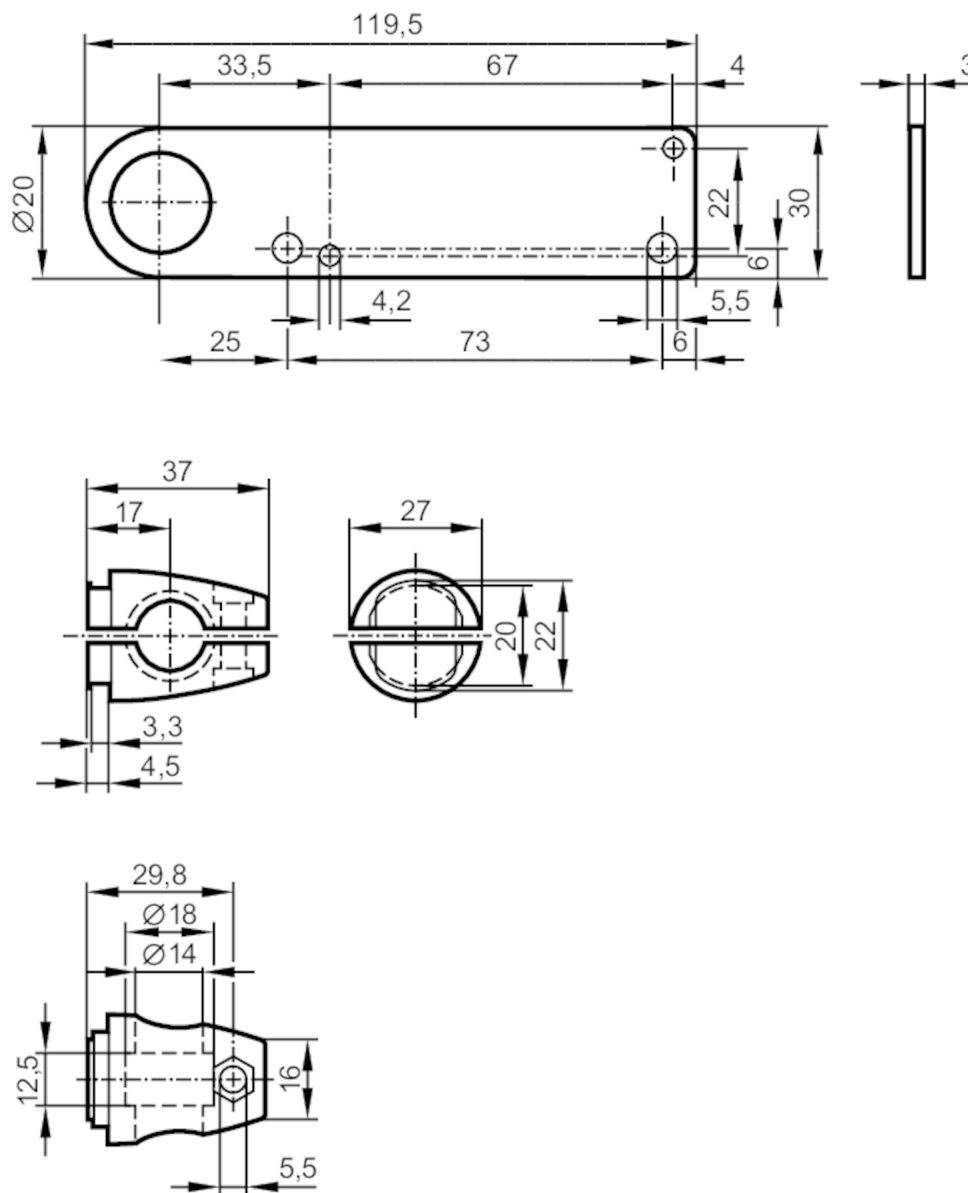


Mounting set for photoelectric sensors

SYSTEM COMPONENT OA BOLT



Application

Design

clamp mounting

Mechanical data

Weight

[g]

269

Type of mounting

free-standing; (M12)

Materials

fixture: stainless steel (316Ti/1.4571); Clamp: diecast zinc

Accessories

Items supplied

screw: 1 x M12 x 55

Remarks

Pack quantity

1 pcs.