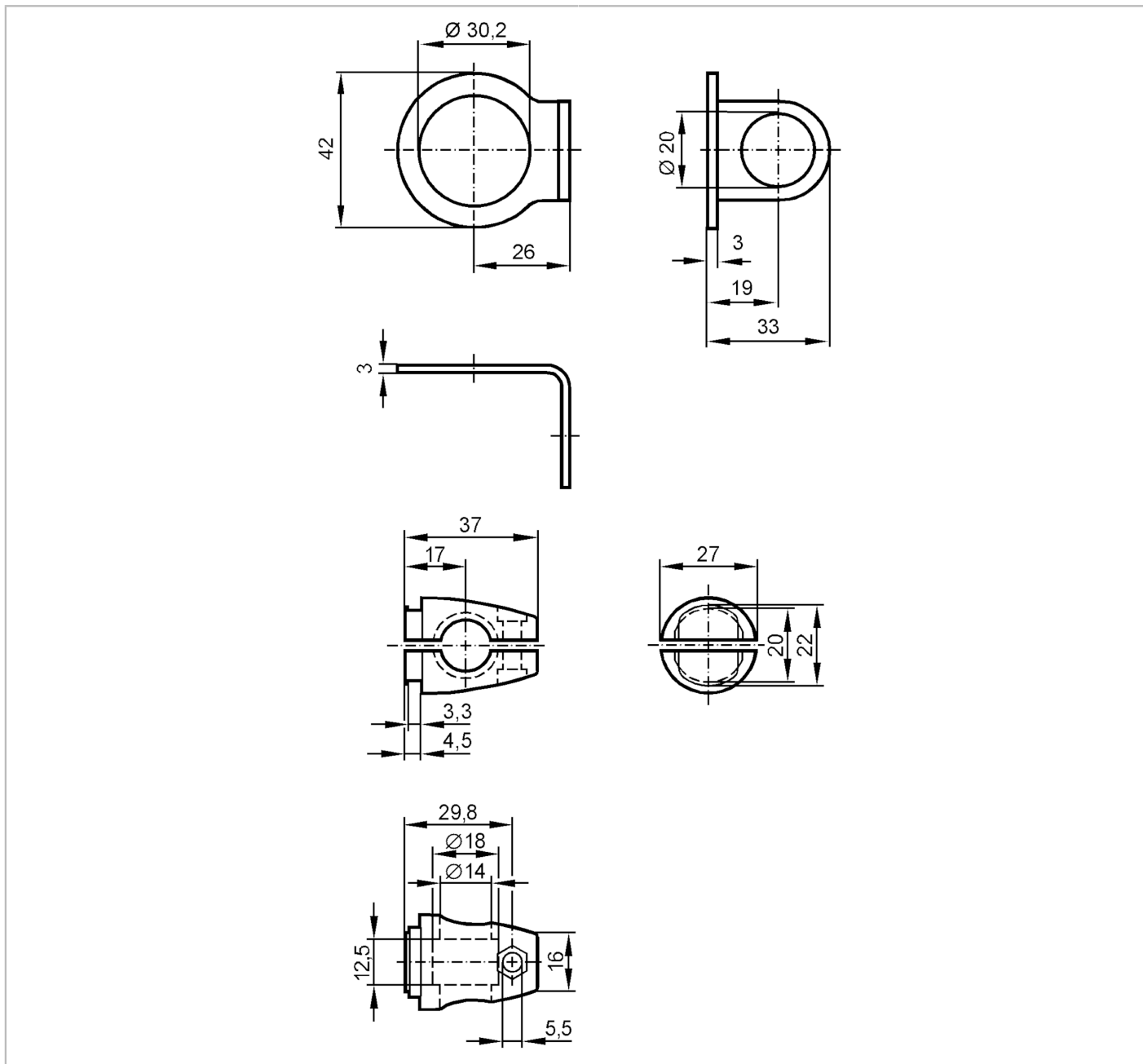


# E20874



## Mounting set for position sensors

SYSTEM COMPONENT M30 BOLT



Application	
Design	clamp mounting, for types, M30
Mechanical data	
Weight [g]	213.5
Type of mounting	free-standing; (M12)
Dimensions [mm]	$\varnothing 30.2$
Materials	fixture: stainless steel (316Ti/1.4571); Clamp: stainless steel (1.4408); screw: stainless steel; washers: stainless steel; Nuts: stainless steel
Accessories	
Items supplied	screw: 1 x (M12 x 55 mm)
	washers: 2
	Nuts: 2 x (M12)

# E20874



## Mounting set for position sensors

SYSTEM COMPONENT M30 BOLT

Remarks	
Pack quantity	1 pcs.