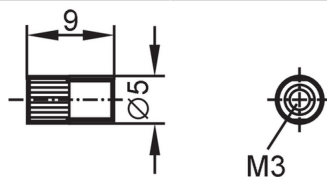


# E20679



## Lens attachment for fibre optics

LENS ATTACHMENT M3



Application	
Design	for through-beam fibre optics M3
Operating conditions	
Ambient temperature [°C]	-40...230
Mechanical data	
Weight [g]	1.5
Housing	cylindrical
Dimensions [mm]	M3 / L = 9
Thread designation	M3
Materials	aluminium black anodised; glass
Remarks	
Pack quantity	1 pcs.