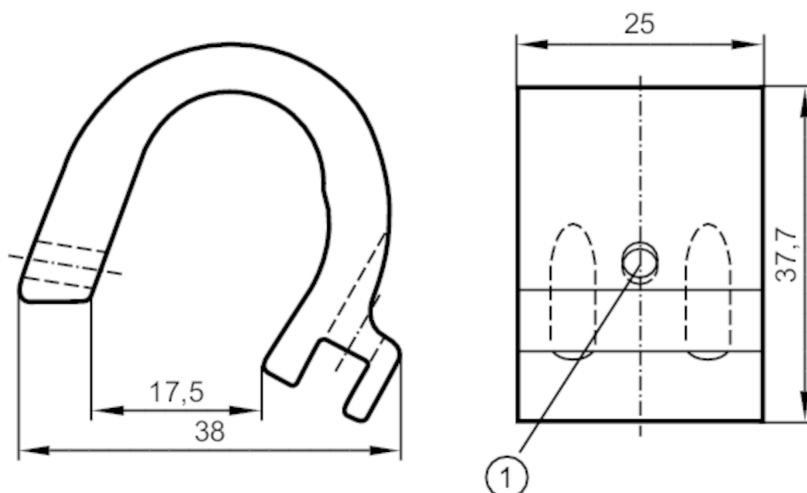


## Mounting adapter for tie-rod/integrated profile cylinders

ADAPT TIE ROD/PROFILE



### Application

Design

for types MKT, for types MKT

### Mechanical data

Weight

[g]

30.4

Materials

Adapter: aluminium; screw: stainless steel

Clamping range

[mm]

9...17

### Remarks

Pack quantity

1 pcs.