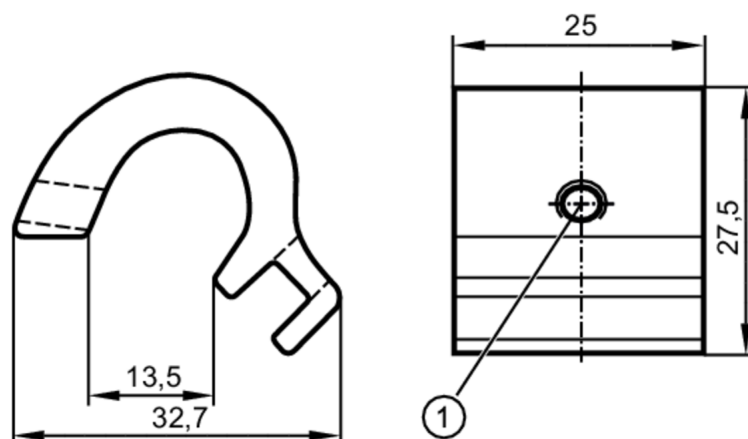


Mounting adapter for tie-rod/integrated profile cylinders

ADAPT TIE ROD/PROFILE



1 Mounting screw SW 2

Application

Design	for types MKT, for types MKT
--------	------------------------------

Mechanical data

Weight	[g]	20.2
Materials	Adapter: aluminium; screw: stainless steel	
Tightening torque	[Nm]	0.5
Clamping range	[mm]	9...13.5

Remarks

Pack quantity	1 pcs.
---------------	--------