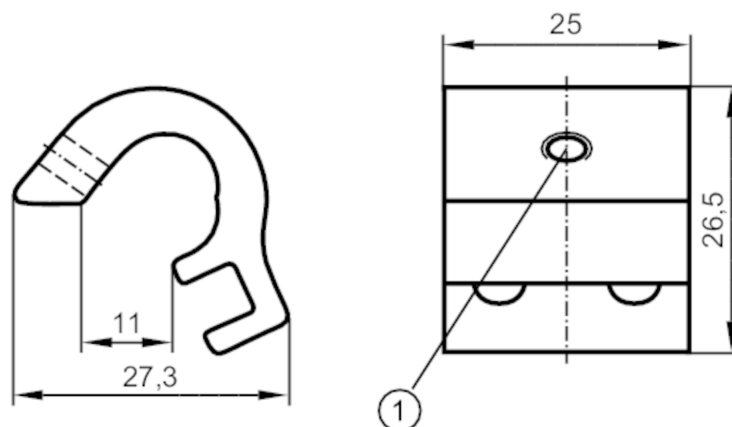


E12231



Mounting adapter for tie-rod/integrated profile cylinders

ADAPT TIE ROD/PROFILE



1 Mounting screw SW 2

Application

Design for types MKT, for types MKT

Mechanical data

Weight	[g]	16.1
Materials	Adapter: aluminium; screw: stainless steel	
Clamping range	[mm]	5...11

Remarks

Pack quantity 1 pcs.