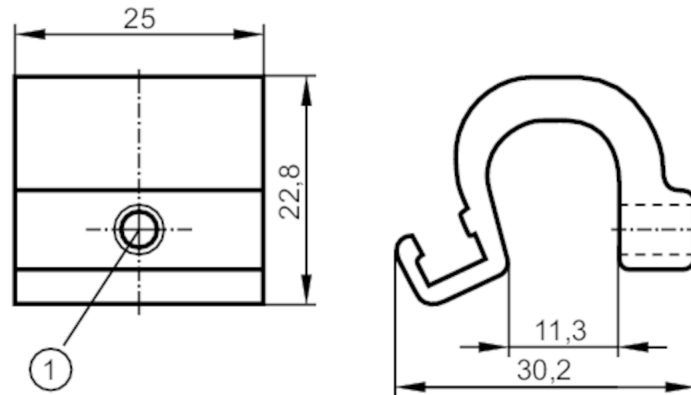


E11797



Mounting adapter for tie-rod/integrated profile cylinders

ADAPT TIE ROD/PROFILE CYL



1 Mounting screw SW 2.5

Application

Design for types MKT

Mechanical data

Weight	[g]	18.5
Dimensions	[mm]	22.8 x 25 x 30.2
Materials		aluminium; screw: stainless steel
Clamping range	[mm]	5...11

Remarks

Pack quantity 1 pcs.