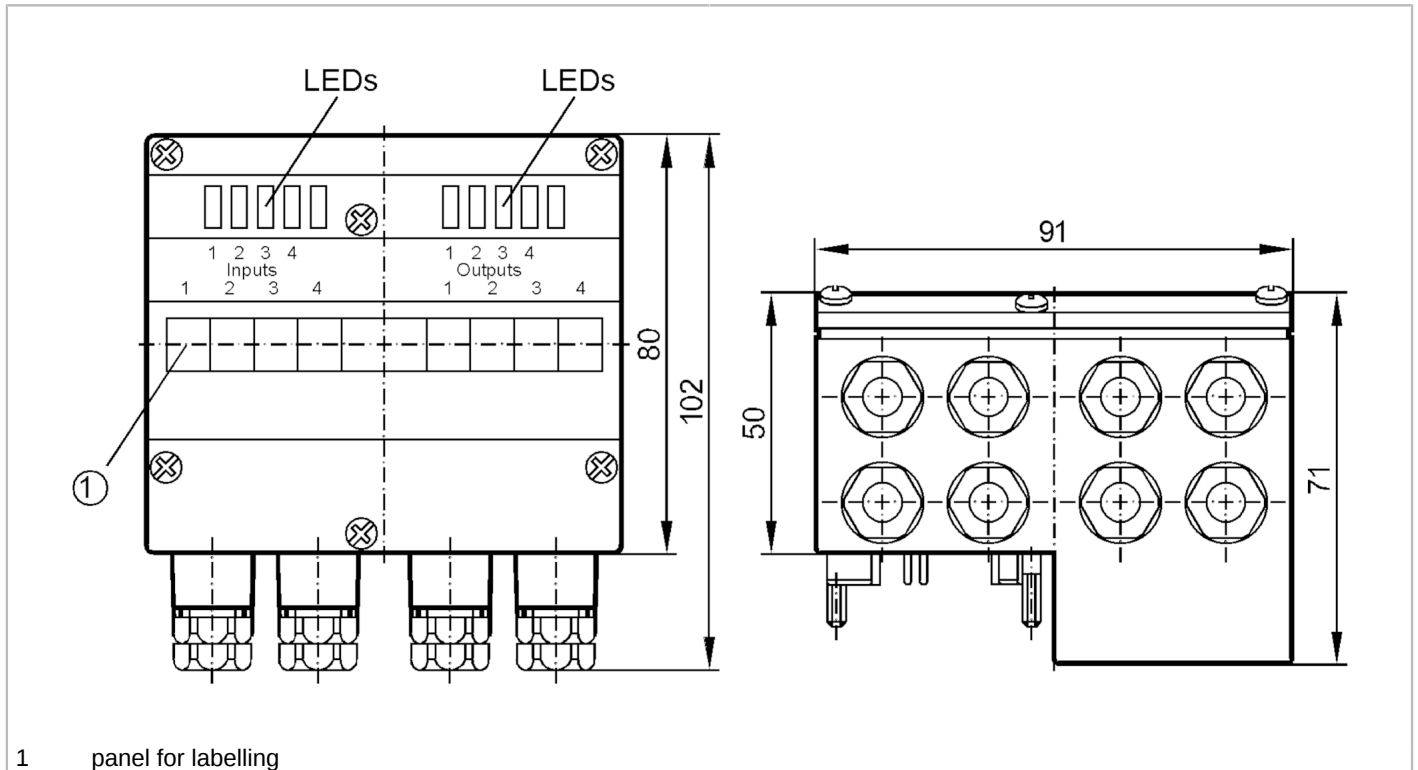


AC2035



AS-Interface universal module

EEMS/Module/4DI/4DO/T/CCT



Application	
Application	field installation
Electrical data	
Operating voltage [V]	26.5...31.6 DC
Max. current consumption from AS-i [mA]	230
Max. current load total [A]	4
Integrated watchdog	yes
Inputs / outputs	
Number of inputs and outputs	Number of digital inputs: 4; Number of digital outputs: 4
Inputs	
Number of digital inputs	4
Input circuit of digital inputs	PNP
Sensor supply of the inputs	AS-i
Voltage supply [V]	20...30
Max. total current rating of inputs [mA]	200
Input current High [mA]	> 5
Input current Low [mA]	< 3
Switching level high [V]	> 10
Digital inputs protected against short circuits	yes

AC2035



AS-Interface universal module

EEMS/Module/4DI/4DO/T/CCT

Outputs	
Number of digital outputs	4
Circuit	PNP
Voltage range DC [V]	24; (to PELV)
Max. current load per output [mA]	1000; (DC-12 / DC-13)
Short-circuit proof	yes
Electrically separated	yes
Actuator supply outputs	AUX

Operating conditions	
Ambient temperature [°C]	-25...60
Protection	IP 65

Tests / approvals	
EMC	EN 50295

AS-i classification																															
AS-i master profile	M2; M3; M4																														
AS-i profile	S-7.F.F																														
AS-i I/O configuration [hex]	7																														
AS-i ID code [hex]	F.F																														
Assignment of the data bits	<table border="1"><thead><tr><th>data bit</th><th>D0</th><th>D1</th><th>D2</th><th>D3</th></tr></thead><tbody><tr><td>bidirectional</td><td>I-1 / O-1</td><td>I-2 / O-2</td><td>I-3 / O-3</td><td>I-4 / O-4</td></tr></tbody></table>	data bit	D0	D1	D2	D3	bidirectional	I-1 / O-1	I-2 / O-2	I-3 / O-3	I-4 / O-4																				
data bit	D0	D1	D2	D3																											
bidirectional	I-1 / O-1	I-2 / O-2	I-3 / O-3	I-4 / O-4																											
Assignment of the parameter bits	<table border="1"><thead><tr><th>parameter bit</th><th>function</th><th></th><th></th><th></th><th></th></tr></thead><tbody><tr><td>P0</td><td>watchdog for all outputs</td><td>:</td><td>activated</td><td>* /</td><td>deactivated</td></tr><tr><td>P1</td><td>not used</td><td></td><td></td><td></td><td></td></tr><tr><td>P2</td><td>not used</td><td></td><td></td><td></td><td></td></tr><tr><td>P3</td><td>not used</td><td></td><td></td><td></td><td></td></tr></tbody></table>	parameter bit	function					P0	watchdog for all outputs	:	activated	* /	deactivated	P1	not used					P2	not used					P3	not used				
parameter bit	function																														
P0	watchdog for all outputs	:	activated	* /	deactivated																										
P1	not used																														
P2	not used																														
P3	not used																														

Mechanical data	
Weight [g]	317
Housing	rectangular
Type of mounting	AS-i interface to FC-E or SC lower parts
Dimensions [mm]	102 x 91 x 71
Materials	PA 6-GF30; stainless steel (303/1.4305)

Displays / operating elements		
Display	operation	LED, green
	function	LED, yellow

Electrical connection	
Module connection	Flat cables

Remarks	
Remarks	Inputs and outputs must be electrically isolated.
Pack quantity	1 pcs.

Electrical connection	
cage clamps:	
contact pins to module lower part, FK-E / PG:	