

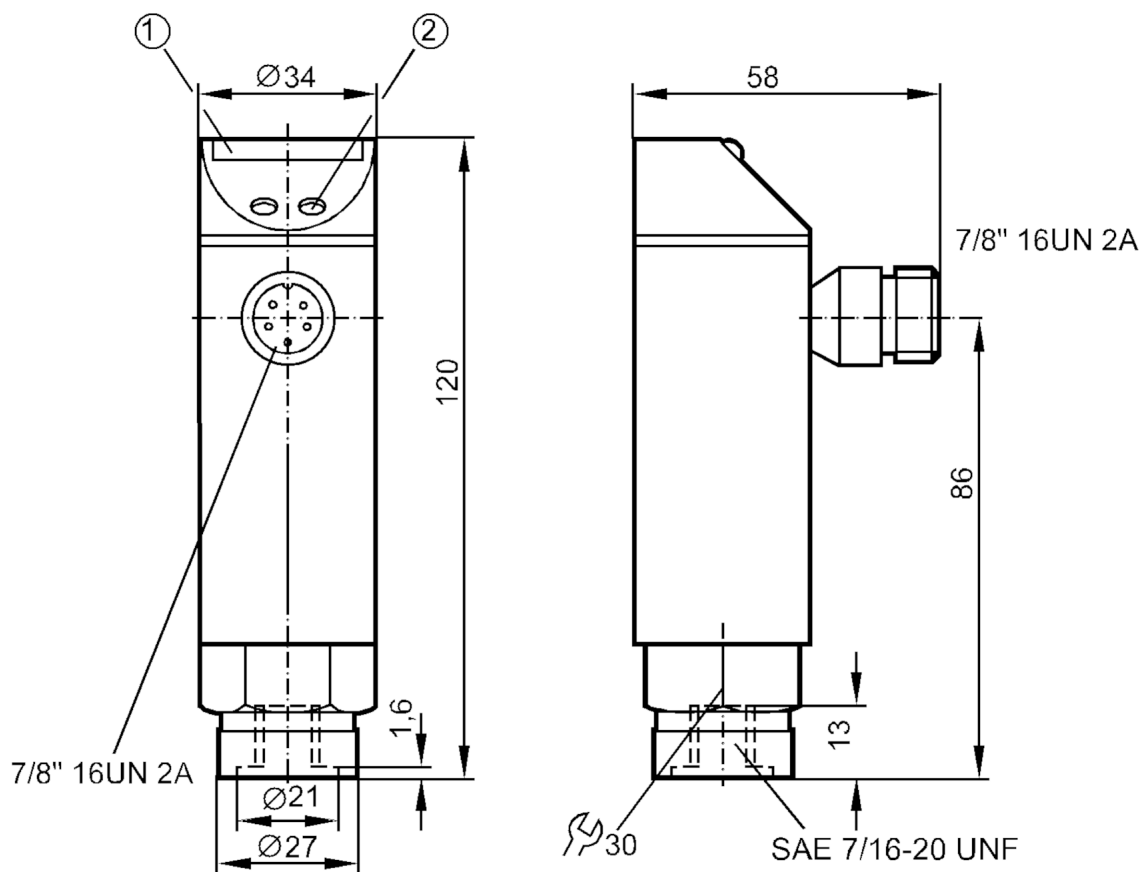
Pressure sensor with LED bar display

PB-100PSBU76-HFBOW/LS/ IV

Article no longer available - archive entry

Alternative articles: PN4222

When selecting an alternative article and accessories please note that technical data may differ!



- 1 LED bar display
2 programming button



Product characteristics

Number of inputs and outputs	Number of digital outputs: 1
Measuring range [psi]	0...1000
Process connection	threaded connection 7/16" - 20 UNF internal thread

Application

Application	for industrial applications
Media	liquids and gases
Conditionally suitable for	For gaseous media the application is limited to max. 25 bar.
Medium temperature [°C]	-25...70
Min. bursting pressure [psi]	9000
Pressure rating [psi]	4500
Type of pressure	relative pressure



Pressure sensor with LED bar display

PB-100PSBU76-HFBOW/LS/ IV

Electrical data		
Operating voltage	[V]	102...132 AC
Current consumption	[mA]	20
Protection class		I
Power-on delay time	[s]	0.35
Integrated watchdog		yes
Inputs / outputs		
Number of inputs and outputs		Number of digital outputs: 1
Outputs		
Total number of outputs		1
Output signal		switching signal
Number of digital outputs		1
Output function		normally open
Max. voltage drop switching output AC	[V]	2
Permanent current rating of switching output AC	[mA]	250; ((...70 °C) 1000 (...60 °C) 1500 (...45 °C) 2500 (...20 °C))
Switching frequency AC	[Hz]	10
Short-circuit protection		no
Overload protection		no
Measuring/setting range		
Measuring range	[psi]	0...1000
Set point SP	[psi]	50...1000
Reset point rP	[psi]	30...980
In steps of	[psi]	10
Note on hysteresis		adjustable
Accuracy / deviations		
Switch point accuracy	[% of the final value]	< ± 2,0
Repeatability		
Temperature drift per 10 K		< ± 0.3
Software / programming		
Adjustment of the switch point		programming button
Operating conditions		
Ambient temperature	[°C]	-25...70
Storage temperature	[°C]	-40...100
Protection		IP 67
Tests / approvals		
EMC	IEC 801/2 ESD	4 kV CD / 8 kV AD
	IEC 801/3 HF	10 V/m
	IEC 801/4 Burst	2 kV
Shock resistance	DIN IEC 68-2-27	50 g (11 ms)
Vibration resistance	DIN IEC 68-2-6	20 g (10...2000 Hz)

PB4312



Pressure sensor with LED bar display

PB-100PSBU76-HFBOW/LS/ IV

Mechanical data		
Materials	EPDM/X; FKM; NBR; PBT; PC; stainless steel (304/1.4301)	
Materials (wetted parts)	FKM; ceramics; stainless steel (303/1.4305)	
Min. pressure cycles	100 million	
Process connection	threaded connection 7/16" - 20 UNF internal thread	

Displays / operating elements		
Display	switching status	LED, yellow
	measured values	10 x LED, green Resolution 10% of the final value

Remarks	
Pack quantity	1 pcs.

Electrical connection

Connector: 1 x 7/8"; coding: A



Connection

