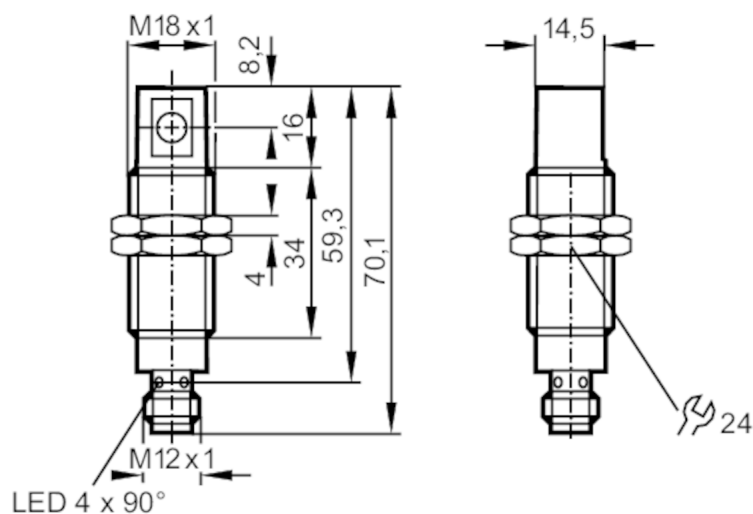


## Through-beam sensor transmitter

OGS-00KG/US/90°



## Product characteristics

Type of light	red light
Housing	threaded type

## Application

Function principle	Through-beam sensor
--------------------	---------------------

## Electrical data

Operating voltage	[V]	10...30 DC; ("supply class 2" to cULus)
Current consumption	[mA]	< 19
Protection class		II
Reverse polarity protection		yes
Type of light		red light
Wave length	[nm]	660

## Detection zone

Transmitter / receiver		transmitter
Range	[m]	< 9
Range adjustable		no
Max. light spot diameter	[mm]	3000
Light spot dimensions refer to		at maximum range

## Operating conditions

Ambient temperature	[°C]	-25...60
Protection		IP 68

## Tests / approvals

EMC	EN 60947-5-2	
	EN 55011	class B
MTTF	[years]	1714

## Mechanical data

Weight	[g]	58
--------	-----	----

# OG5129



## Through-beam sensor transmitter

OGS-00KG/US/90°

Housing	threaded type
Dimensions [mm]	M18 x 1 / L = 59.3
Thread designation	M18 x 1
Materials	stainless steel; ABS
Lens material	PMMA

### Displays / operating elements

Display	operation	1 x LED, green
---------	-----------	----------------

### Accessories

Items supplied	Nuts: 2
	lock washers: 2

### Remarks

Pack quantity	1 pcs.
---------------	--------

### Electrical connection

Connector: 1 x M12; coding: A



### Connection

