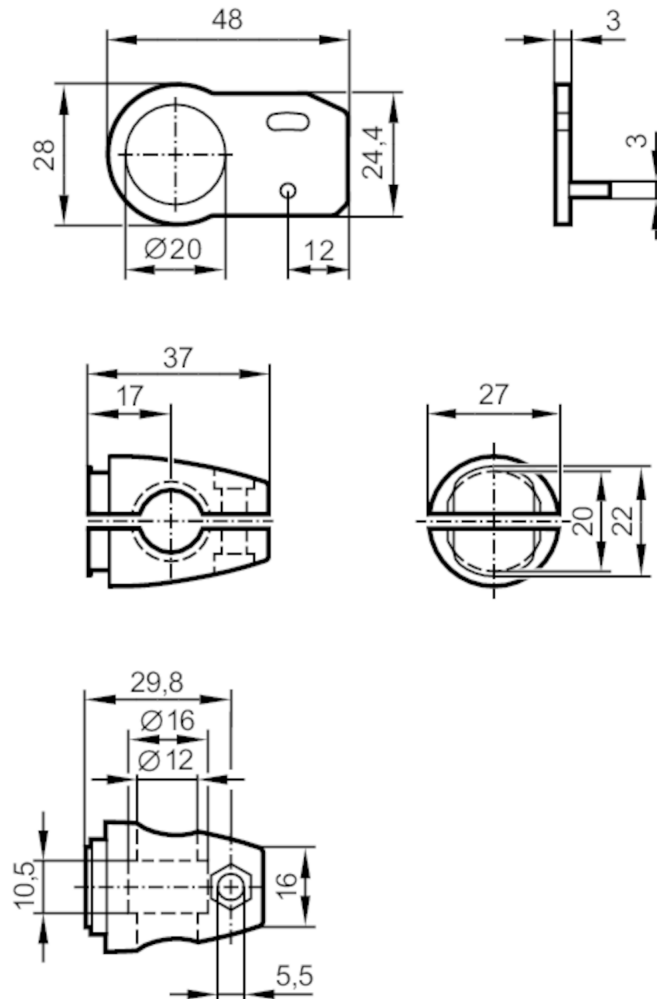


Mounting set for photoelectric sensors

O8 CLAMP BRACKET 12 MM



Application

Design

for types O8

Mechanical data

Weight

[g]

91

Type of mounting

Mounting rod; (\varnothing 12 mm)

Materials

stainless steel (316Ti/1.4571)

Accessories

Items supplied

cylinder screws: 1 x M3 x 14, stainless steel

cylinder screws: 1 x M5 x 16, galvanised steel

lock nuts: 1 x M3 x 14, stainless steel

lock nuts: 1 x M5 x 16, galvanised steel

Clamp: 1

Remarks

Pack quantity

1 pcs.