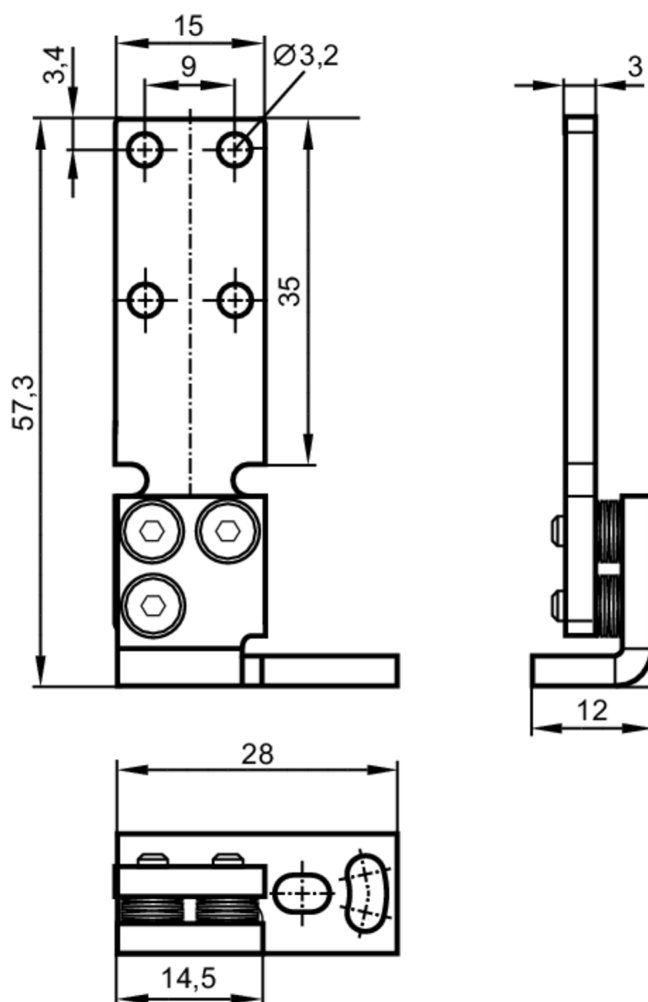


E21239



Mounting and fine adjustment bracket

FIXTURE FOR FINE ADJUSTMENT



Application

Installation free-standing mounting; (with fine adjustment)

Mechanical data

Weight [g]	38.5
Type of mounting	free-standing
Dimensions [mm]	57.3 x 12 x 28
Materials	fixture: stainless steel; Spring: spring steel; screws: stainless steel

Accessories

Items supplied	screws: 2
----------------	-----------

Remarks

Pack quantity	1 pcs.
---------------	--------