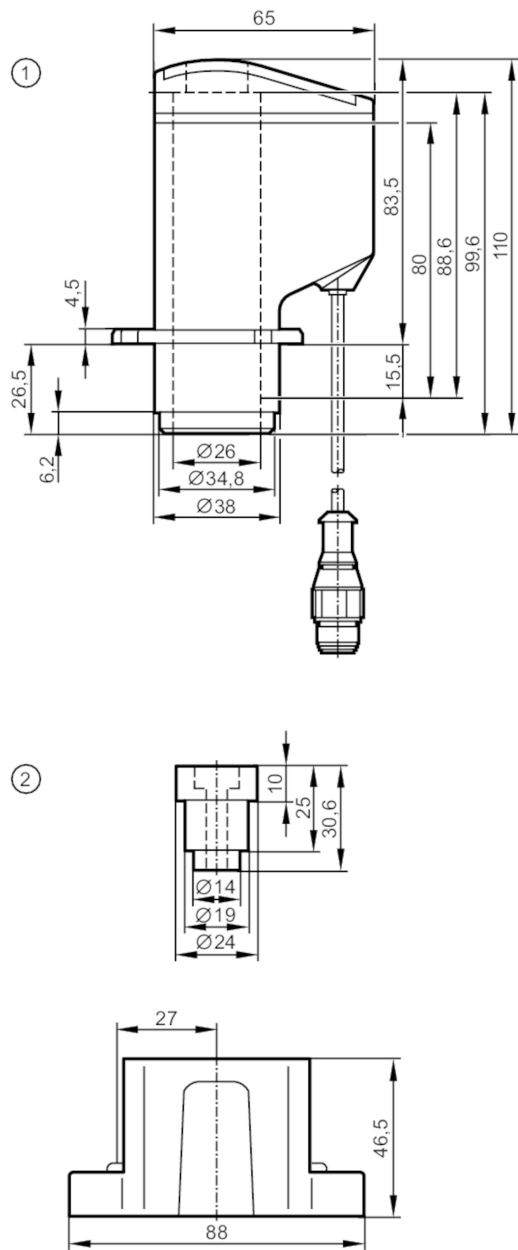


ZZ0214



Position sensor for rising stem valves

SET IX5010+E11900



Product characteristics		
Dimensions	[mm]	65 x 43 x 110
Operating conditions		
Ambient temperature	[°C]	-25...85
Note on ambient temperature		firmly laid cable
Protection		IP 65; IP 67; (only in conjunction with an installation in the valve head that provides sufficient protection against mechanical damage of the sensor)

ZZ0214



Position sensor for rising stem valves

SET IX5010+E11900

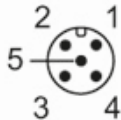
Tests / approvals		
EMC	EN 61000-4-2 ESD	4 kV CD / 8 kV CD
	EN 61000-4-3 HF radiated	10 V/m
	EN 61000-4-4 Burst	2 kV coupling clamp
	EN 61000-4-6 HF conducted	3 V

Mechanical data		
Weight	[g]	491
Dimensions	[mm]	65 x 43 x 110

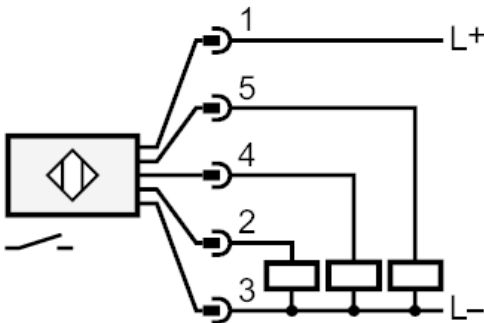
Remarks	
Pack quantity	1 pcs.

Electrical connection - plug

Connector: 1 x M12; coding: A



Connection



4: OUT 3 open
5: OUT 1 seat
2: OUT 2 close