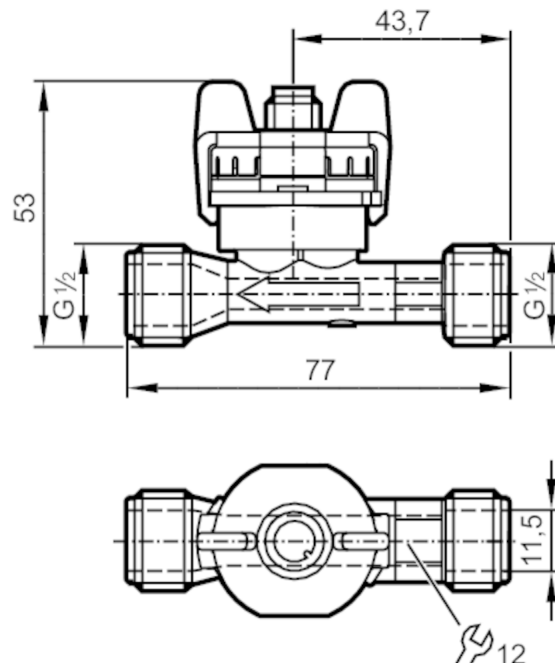


# SV3150



## Vortex flow meter

SVM12XXD0KG/US-100



### Product characteristics

Number of inputs and outputs	Number of analog outputs: 1	
Measuring range	0.5...10 l/min	0.074...1.474 m/s
Process connection	threaded connection G 1/2 DN6	

### Application

System	gold-plated contacts	
Application	for industrial applications	
Installation	connection to pipe by means of an adapter	
Media	water; glycol solutions; Coolants	
Medium temperature	[°C]	-40...100
Min. bursting pressure	[bar]	25
Min. bursting pressure	[MPa]	2.5
Pressure rating	[bar]	12
Pressure rating	[MPa]	1.2
Note on pressure rating	up to 40 °C	

### Electrical data

Operating voltage	[V]	8...33 DC
Min. insulation resistance	[MΩ]	100; (500 V DC)
Protection class		III
Power-on delay time	[s]	< 2

### Inputs / outputs

Number of inputs and outputs	Number of analog outputs: 1
------------------------------	-----------------------------

# SV3150



## Vortex flow meter

SVM12XXD0KG/US-100

Outputs		
Total number of outputs	1	
Output signal	analog signal	
Number of analog outputs	1	
Analog current output [mA]	4...20; (Q [l/min] = 0,625 x (I - 4 mA))	
Max. load [Ω]	< (Ub - 8 V) / 20 mA; Ub = 24 V: 800	
Measuring/setting range		
Measuring range	0.5...10 l/min	0.074...1.474 m/s
Accuracy / deviations		
Flow monitoring		
Accuracy (in the measuring range)	Q < 50 % MEW: < 1 % MEW / Q > 50 % MEW: < 2 % MW; (water)	
Repeatability	0,2; (% of the final value)	
Reaction times		
Flow monitoring		
Response time [s]	0.5	
Operating conditions		
Ambient temperature [°C]	-15...85	
Note on ambient temperature	medium temperature > 0 °C: -30...85	
Storage temperature [°C]	-30...85	
Protection	IP 65	
Cavitation	P(absolute) discharge / P(difference) > 5.5 to avoid cavitation	
Tests / approvals		
EMC	EN 61326-2-3	
Shock resistance	DIN EN 60068-2-27	30 g (11 ms)
Vibration resistance	DIN EN 60068-2-6	with water / 10...61 Hz 1 mm
		with water / 61...2000 Hz 2 g
MTTF [years]	380	
Pressure equipment directive	sound engineering practice; can be used for group 2 fluids; group 1 fluids on request	
Mechanical data		
Weight [g]	66	
Material	PA 6T	
Materials (wetted parts)	ETFE; PA 6T; EPDM	
Tightening torque [Nm]	12	
Process connection	threaded connection G 1/2 DN6	
Remarks		
Remarks	MW = Measured value	
	MEW = Final value of the measuring range	
Pack quantity	1 pcs.	

# SV3150



## Vortex flow meter

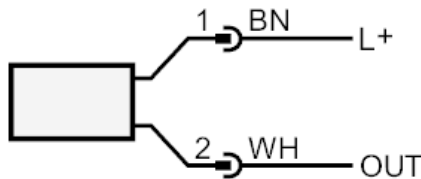
SVM12XXD0KG/US-100

### Electrical connection

Connector: 1 x M12; coding: A; Contacts: gold-plated



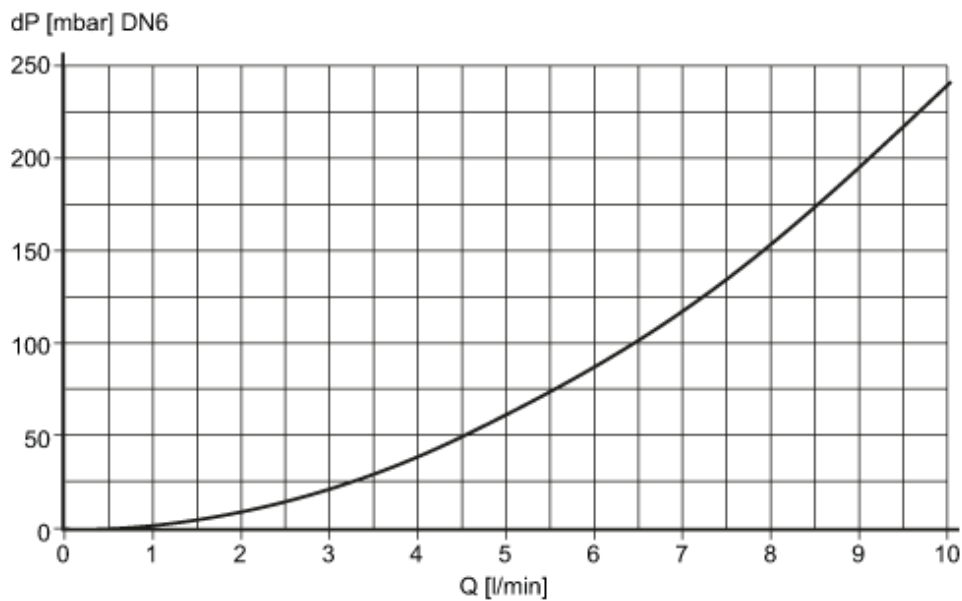
### Connection



OUT: analog output  
Colors to DIN EN 60947-5-2  
Core colors :  
BN = brown  
WH = white

### Diagrams and graphs

#### Pressure loss



dP Pressure loss  
Q volumetric flow quantity

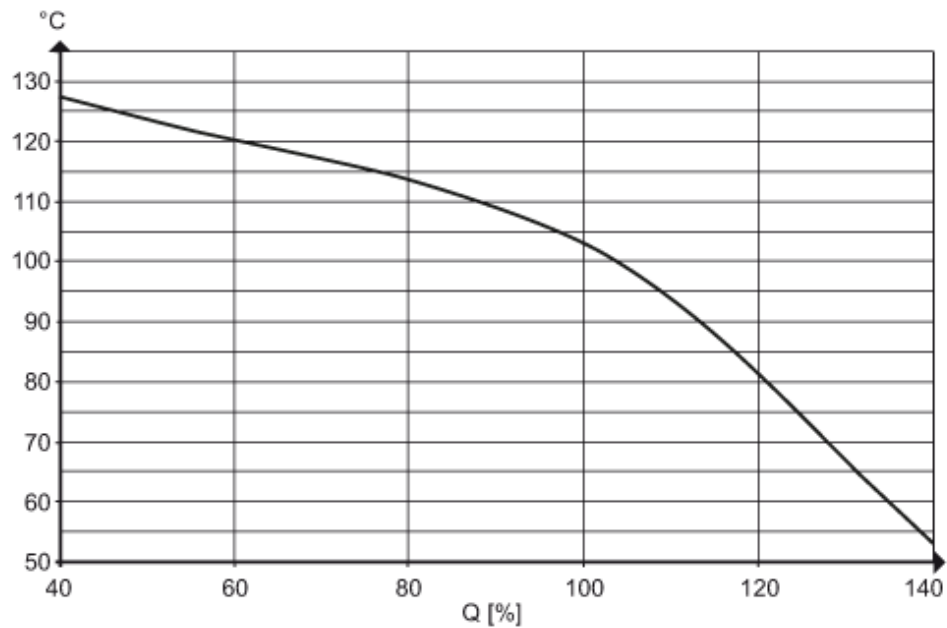
# SV3150



## Vortex flow meter

SVM12XXD0KG/US-100

Minimum lifetime 10 years  
referred to flow and high medium  
temperatures



pressure rating (bar)

