

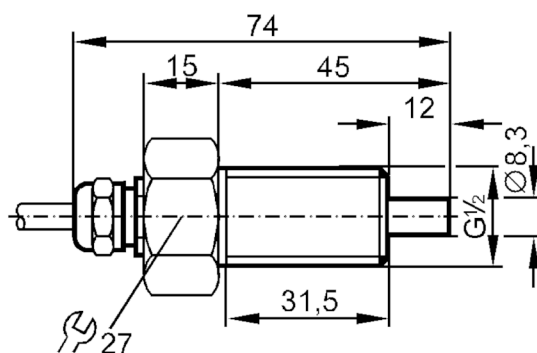
ST3213



Flow sensor for connection to an evaluation unit

STR12ABBE1/20m

Article no longer available - archive entry



Product characteristics

Process connection	G 1/2 external thread
--------------------	-----------------------

Application

Application	Ex zone 1
-------------	-----------

Medium temperature	[°C]	-25...80
--------------------	------	----------

Pressure rating	[bar]	30
-----------------	-------	----

Liquids

Application	Ex zone 1
-------------	-----------

Medium temperature	[°C]	-25...80
--------------------	------	----------

Gases

Medium temperature	[°C]	-25...80
--------------------	------	----------

Electrical data

Connection to control monitor	VS 0100 Ex
-------------------------------	------------

Measuring/setting range

Liquids

Setting range	[cm/s]	3...300
---------------	--------	---------

Greatest sensitivity	[cm/s]	3...60
----------------------	--------	--------

Gases

Setting range	[cm/s]	200...2000
---------------	--------	------------

Greatest sensitivity	[cm/s]	100...800
----------------------	--------	-----------

Accuracy / deviations

Max. temperature gradient of medium	[K/min]	15
-------------------------------------	---------	----

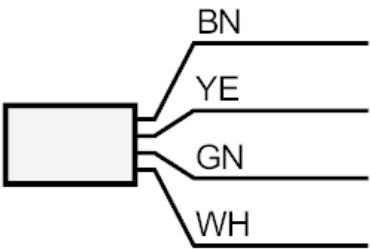
ST3213



Flow sensor for connection to an evaluation unit

STR12ABBE1/20m

Reaction times		
Response time	[s]	1...10
Liquids		
Response time	[s]	1...10
Gases		
Response time	[s]	1...10
Operating conditions		
Protection		IP 67
Mechanical data		
Housing		Threaded type
Material		stainless steel (1.4571/316Ti)
Process connection		G 1/2 external thread
Remarks		
Pack quantity		1 pcs.
Electrical connection		
Cable: 20 m, PUR; 4 x 0.34 mm²		
Connection		



	Core colors :
BN =	brown
GN =	green
WH =	white
YE =	yellow