

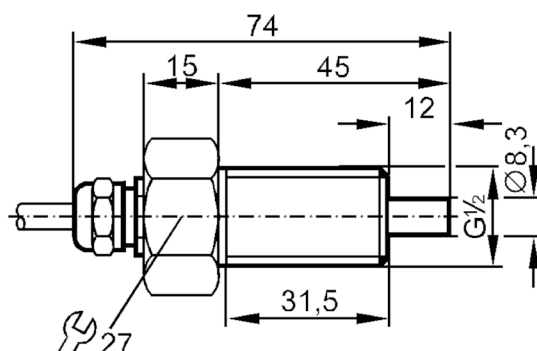
ST3211



Flow sensor for connection to an evaluation unit

STR12ABBE1/6M

Article no longer available - archive entry



Product characteristics

Process connection	G 1/2 external thread
--------------------	-----------------------

Application

Application	Ex zone 1
Medium temperature [°C]	-25...80
Pressure rating [bar]	30

Liquids

Application	Ex zone 1
Medium temperature [°C]	-25...80

Gases

Medium temperature [°C]	-25...80
-------------------------	----------

Electrical data

Connection to control monitor	VS 0100 Ex
-------------------------------	------------

Measuring/setting range

Liquids

Setting range [cm/s]	3...300
Greatest sensitivity [cm/s]	3...60

Gases

Setting range [cm/s]	200...2000
Greatest sensitivity [cm/s]	100...800

Accuracy / deviations

Max. temperature gradient of medium [K/min]	15
---	----

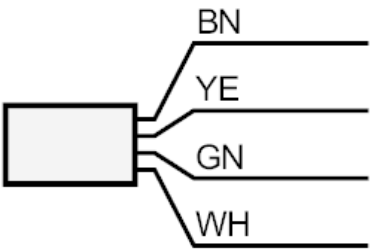
ST3211



Flow sensor for connection to an evaluation unit

STR12ABBE1/6M

Reaction times		
Response time	[s]	1...10
Liquids		
Response time	[s]	1...10
Gases		
Response time	[s]	1...10
Operating conditions		
Protection		IP 67
Mechanical data		
Housing		Threaded type
Material		stainless steel (1.4571/316Ti)
Process connection		G 1/2 external thread
Remarks		
Pack quantity		1 pcs.
Electrical connection		
Cable: 6 m, PUR; 4 x 0.34 mm²		
Connection		



	Core colors :
BN =	brown
GN =	green
WH =	white
YE =	yellow