

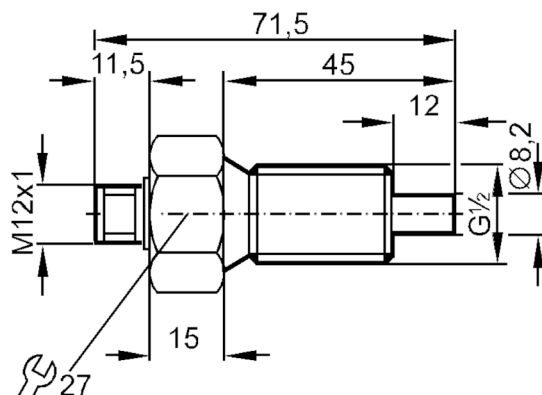
ST3009



Flow sensor for connection to an evaluation unit

STR12ADA/US-100-H

Article no longer available - archive entry



Product characteristics

Process connection	G 1/2 external thread
--------------------	-----------------------

Application

Application	high pressure
Media	Liquids; Gases
Medium temperature [°C]	-25...80
Pressure rating [bar]	300

Liquids

Application	high pressure
Medium temperature [°C]	-25...80

Gases

Medium temperature [°C]	-25...80
-------------------------	----------

Electrical data

Connection to control monitor	VS 0100
-------------------------------	---------

Measuring/setting range

Liquids

Setting range [cm/s]	3...300
Greatest sensitivity [cm/s]	3...60

Gases

Setting range [cm/s]	5...15
----------------------	--------

Accuracy / deviations

Max. temperature gradient of [K/min] medium	15
---	----

ST3009



Flow sensor for connection to an evaluation unit

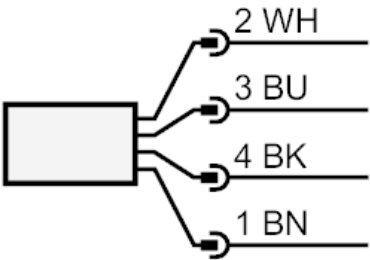
STR12ADA/US-100-H

Reaction times		
Response time	[s]	1...10
Liquids		
Response time	[s]	1...10
Gases		
Response time	[s]	1...10
Operating conditions		
Protection		IP 67
Mechanical data		
Housing		Threaded type
Material		stainless steel (1.4571/316Ti)
Process connection		G 1/2 external thread
Remarks		
Pack quantity		1 pcs.
Electrical connection		

Connector: 1 x M12; coding: A; Maximum cable length: 100 m



Connection



BN =
WH =
YE =
GN =

Core colors :
brown
white
yellow
green