

# ST3604

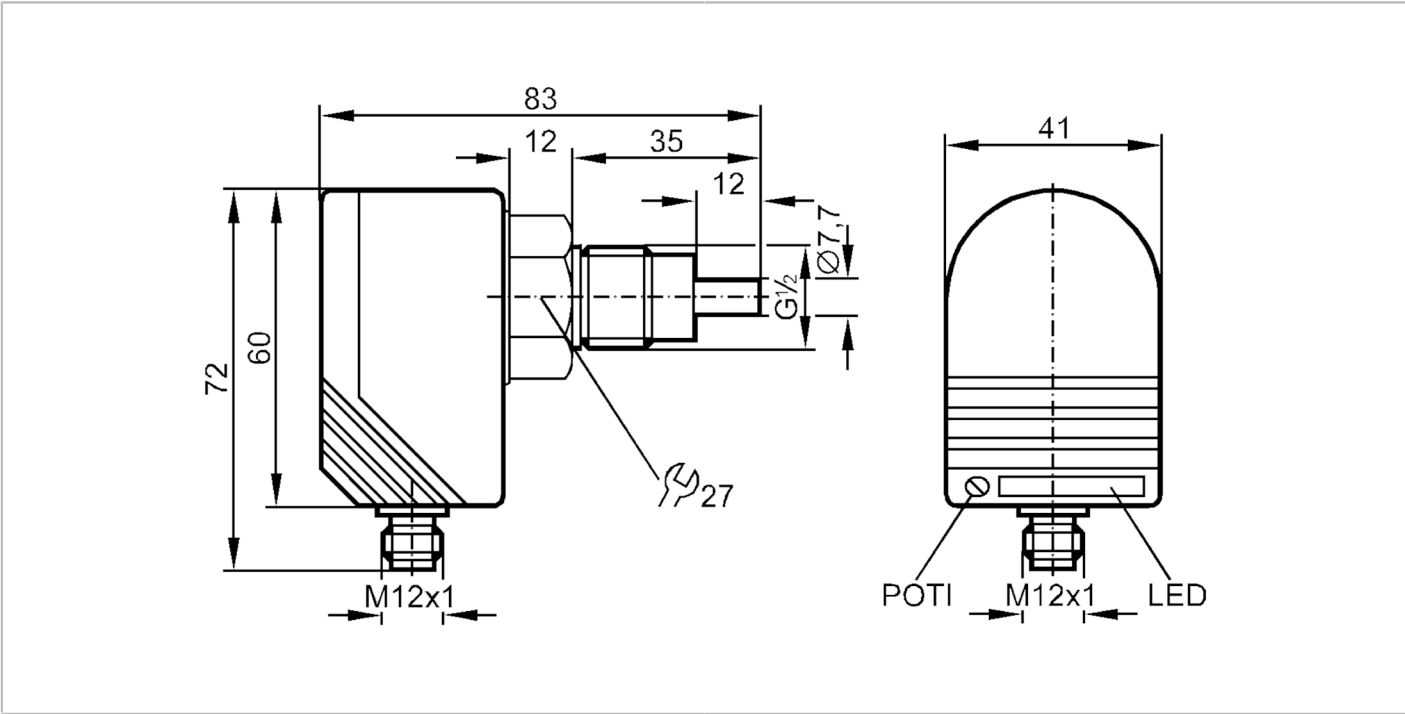


## Flow monitor

SCR12ABAFPKG/US-100-IPF

Article no longer available - archive entry

Alternative articles: SI5000 + E40096  
When selecting an alternative article and accessories please note that technical data may differ!



Product characteristics	
Number of inputs and outputs	Number of digital outputs: 1
Process connection	G 1/2 external thread
Application	
Media	Liquids
Medium temperature [°C]	-25...80
Pressure rating [bar]	30
Electrical data	
Operating voltage [V]	20...36 DC
Current consumption [mA]	< 45
Reverse polarity protection	yes
Power-on delay time [s]	< 20
Inputs / outputs	
Number of inputs and outputs	Number of digital outputs: 1
Outputs	
Total number of outputs	1
Output signal	switching signal
Electrical design	PNP
Number of digital outputs	1

# ST3604



## Flow monitor

SCR12ABAFPKG/US-100-IPF

Output function	normally open / closed; (configurable)	
Max. voltage drop switching output DC [V]		2.5
Permanent current rating of switching output DC [mA]		400
Short-circuit protection		yes
Type of short-circuit protection		yes (non-latching)
Overload protection		yes

### Measuring/setting range

Setting range [cm/s]	3...300
Greatest sensitivity [cm/s]	3...60

### Accuracy / deviations

Max. temperature gradient of medium [K/min]	15
---	----

### Reaction times

Response time [s]	1...10
-------------------	--------

### Software / programming

Adjustment of the switch point	potentiometer
--------------------------------	---------------

### Operating conditions

Ambient temperature [°C]	-20...80
Protection	IP 67

### Mechanical data

Material	PBT-GF20
Materials (wetted parts)	stainless steel (1.4305 / 303)
Process connection	G 1/2 external thread

### Displays / operating elements

Display	Function	11 x LED
---------	----------	----------

### Accessories

Items supplied	sealings: 2 x AMF 30 screwdrivers
----------------	--------------------------------------

### Remarks

Pack quantity	1 pcs.
---------------	--------

### Electrical connection

Connector: 1 x M12; coding: A



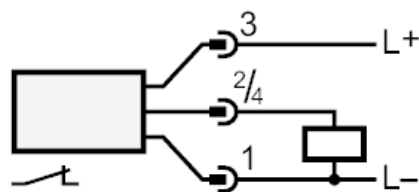
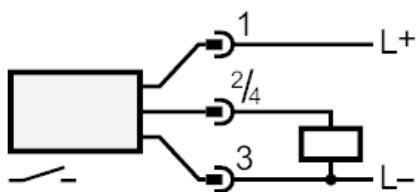
# ST3604



## Flow monitor

SCR12ABAFPKG/US-100-IPF

### Connection



BN = Core colors :  
BU = brown  
BK = blue  
black