

ST2605



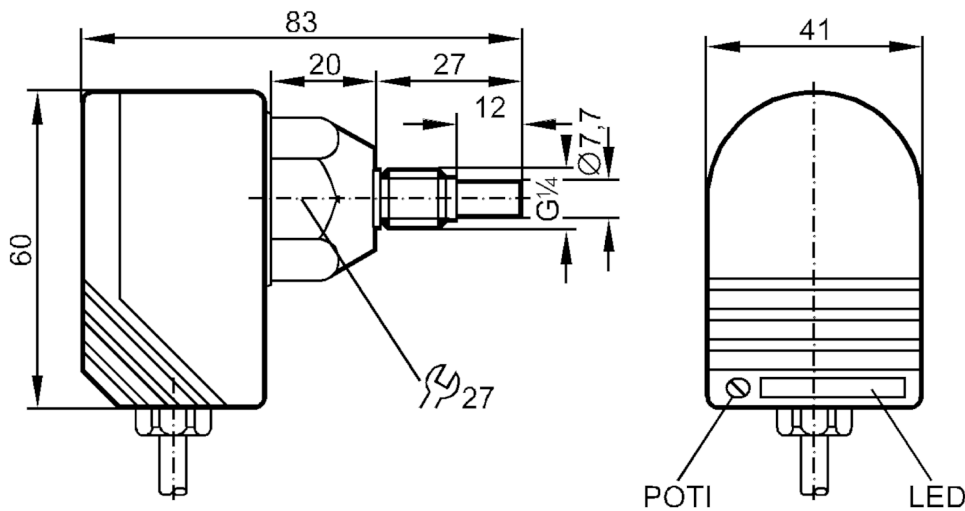
Flow monitor

SCR14ABBFPG/PH

Article no longer available - archive entry

Alternative articles: SI5000 + E40099

When selecting an alternative article and accessories please note that technical data may differ!



Product characteristics	
Number of inputs and outputs	Number of digital outputs: 1
Process connection	G 1/4 external thread
Application	
Media	Liquids
Medium temperature [°C]	-25...80
Pressure rating [bar]	30
Electrical data	
Operating voltage [V]	20...36 DC
Current consumption [mA]	< 45
Reverse polarity protection	yes
Power-on delay time [s]	< 20
Inputs / outputs	
Number of inputs and outputs	Number of digital outputs: 1
Outputs	
Total number of outputs	1
Output signal	switching signal
Electrical design	PNP
Number of digital outputs	1

ST2605



Flow monitor

SCR14ABBFPKG/PH

Output function	normally open / closed; (configurable)	
Max. voltage drop switching output DC [V]	2.5	
Permanent current rating of switching output DC [mA]	400	
Short-circuit protection	yes	
Type of short-circuit protection	yes (non-latching)	
Overload protection	yes	
Measuring/setting range		
Setting range [cm/s]	3...300	
Greatest sensitivity [cm/s]	3...60	
Accuracy / deviations		
Max. temperature gradient of medium [K/min]	15	
Reaction times		
Response time [s]	1...10	
Software / programming		
Adjustment of the switch point	potentiometer	
Operating conditions		
Ambient temperature [°C]	-20...80	
Protection	IP 67	
Mechanical data		
Material	PBT-GF20	
Materials (wetted parts)	stainless steel (1.4571/316Ti)	
Process connection	G 1/4 external thread	
Displays / operating elements		
Display	Function	11 x LED
Accessories		
Items supplied	sealings: 2 x AMF 30	
	screwdrivers	
Remarks		
Pack quantity	1 pcs.	

ST2605



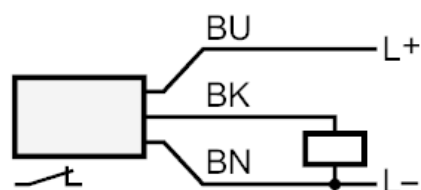
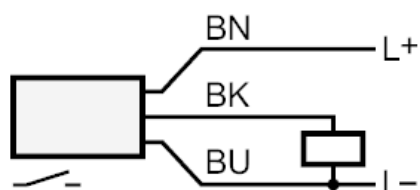
Flow monitor

SCR14ABBFPKG/PH

Electrical connection

Cable: 2 m, PUR; 3 x 0.5 mm²

Connection



BN =	Core colors :
BU =	brown
BK =	blue
	black