

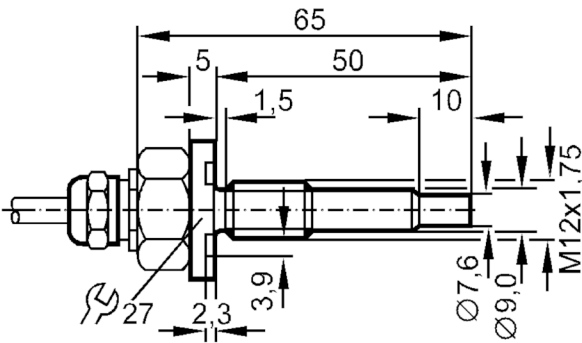
ST1306



Flow sensor for connection to an evaluation unit

STM12ZBB/10M

Article no longer available - archive entry



Product characteristics		
Process connection		M12 x 1,75
Application		
Application		high temperature
Media		Liquids; Gases
Pressure rating	[bar]	30
Liquids		
Application		high temperature
Medium temperature	[°C]	0...120
Gases		
Medium temperature	[°C]	0...100
Electrical data		
Connection to control monitor		VS 0100
Measuring/setting range		
Liquids		
Setting range	[cm/s]	3...300
Greatest sensitivity	[cm/s]	3...60
Gases		
Setting range	[cm/s]	200...1500
Greatest sensitivity	[cm/s]	200...800
Accuracy / deviations		
Max. temperature gradient of medium	[K/min]	15

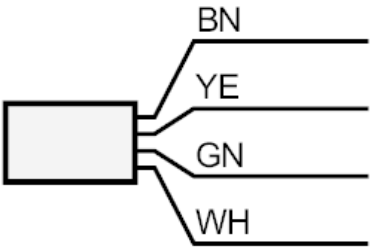
ST1306



Flow sensor for connection to an evaluation unit

STM12ZBB/10M

Reaction times		
Response time	[s]	1...10
Liquids		
Response time	[s]	1...10
Gases		
Response time	[s]	1...10
Operating conditions		
Protection		IP 67
Mechanical data		
Housing		Threaded type
Dimensions	[mm]	M12 x 1.75
Thread designation		M12 x 1.75
Material		stainless steel (1.4571/316Ti)
Process connection		M12 x 1,75
Remarks		
Pack quantity		1 pcs.
Electrical connection		
Cable: 10 m, PUR; Maximum cable length: 100 m; 4 x 0.25 mm²		
Connection		



BN =
GN =
WH =
YE =

Core colors :
brown
green
white
yellow