

ST1305



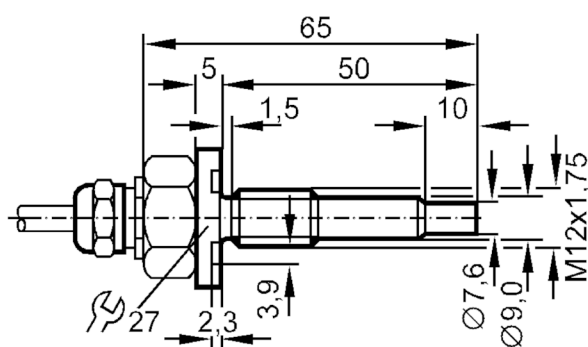
Flow sensor for connection to an evaluation unit

STM12ZBB/6m PUR Kabel, V4A

Article no longer available - archive entry

Alternative articles: ST1306

When selecting an alternative article and accessories please note that technical data may differ!



Product characteristics

Process connection	M12 x 1,75
--------------------	------------

Application

Application	high temperature
Media	Liquids; Gases
Pressure rating [bar]	30

Liquids

Application	high temperature
Medium temperature [°C]	0...120

Gases

Medium temperature	[°C]	0...100
--------------------	------	---------

Electrical data

Connection to control monitor	VS 0100
-------------------------------	---------

Measuring/setting range

Liquids

Setting range	[cm/s]	3...300
Greatest sensitivity	[cm/s]	3...60

Gases

Setting range	[cm/s]	200...1500
Greatest sensitivity	[cm/s]	200...800

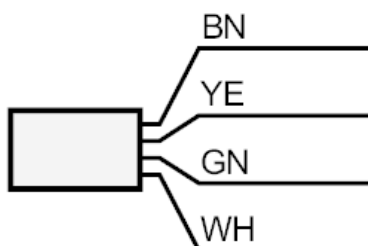
ST1305



Flow sensor for connection to an evaluation unit

STM12ZBB/6m PUR Kabel, V4A

Accuracy / deviations	
Max. temperature gradient of [K/min] medium	15
Reaction times	
Response time [s]	1...10
Liquids	
Response time [s]	1...10
Gases	
Response time [s]	1...10
Operating conditions	
Protection	IP 67
Mechanical data	
Housing	Threaded type
Dimensions [mm]	M12 x 1.75
Thread designation	M12 x 1.75
Material	stainless steel (1.4571/316Ti)
Process connection	M12 x 1,75
Remarks	
Pack quantity	1 pcs.
Electrical connection	
Cable: 6 m, PUR; Maximum cable length: 100 m; 4 x 0.25 mm ²	
Connection	



	Core colors :
BN =	brown
GN =	green
WH =	white
YE =	yellow