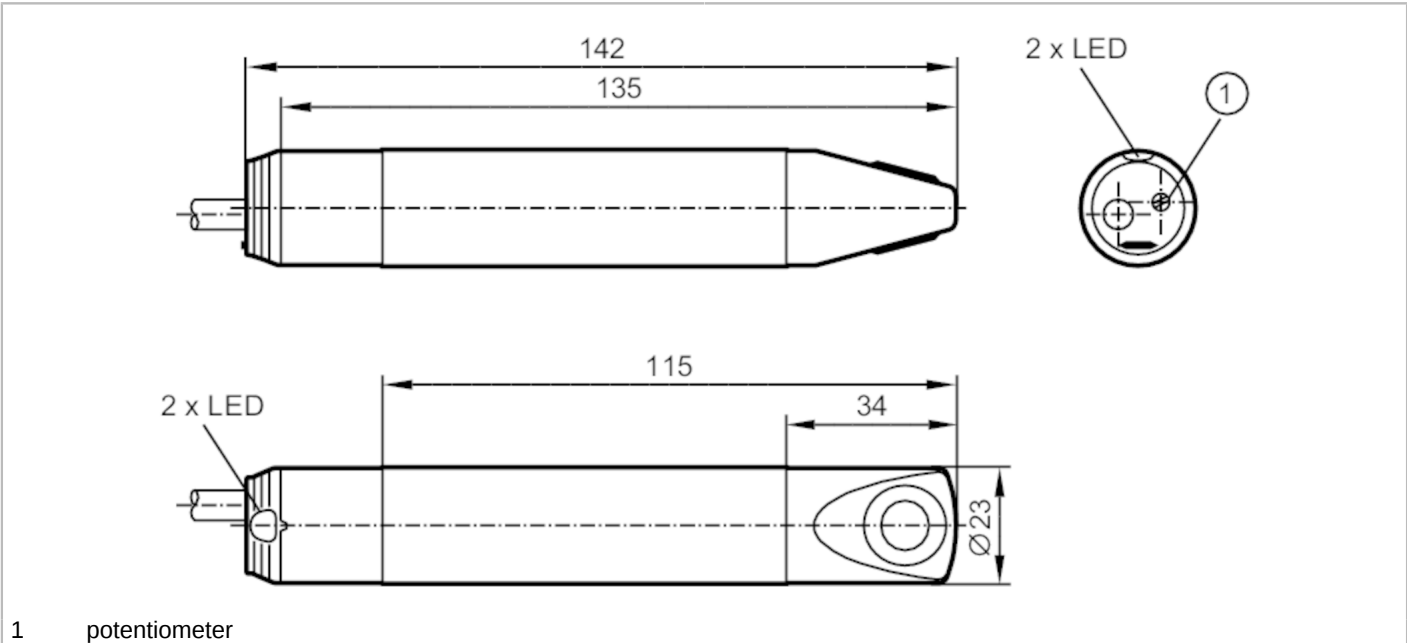


SL5102



Airflow monitor

SLG23CEEKOG/N.C./24VDC/6M



Product characteristics	
Number of inputs and outputs	Number of relay outputs: 1
Process connection	Ø 23 mm
Application	
Medium temperature [°C]	-10...50
Pressure rating [bar]	1
Electrical data	
Operating voltage [V]	18...30 DC
Current consumption [mA]	50
Min. insulation resistance [MΩ]	100; (500 V DC)
Power-on delay time [s]	60
Inputs / outputs	
Number of inputs and outputs	Number of relay outputs: 1
Outputs	
Output signal	switching signal
Number of relay outputs	1
Contact rating	3 A (30 V DC / 250 V AC // cULus: 30 V DC / AC)
Switching function flow monitoring	relay de-energized when flow is present
Measuring/setting range	
Gases	
Setting range [cm/s]	100...1000
Greatest sensitivity [cm/s]	100...400
Accuracy / deviations	
Max. temperature gradient of medium [K/min]	5

SL5102



Airflow monitor

SLG23CEEKOG/N.C./24VDC/6M

Reaction times		
Response time	[s]	3...60
Gases		
Response time	[s]	3...60
Software / programming		
Adjustment of the switch point	potentiometer	
Operating conditions		
Ambient temperature	[°C]	-10...50
Max. relative air humidity	[%]	90
Protection	IP 65	
Tests / approvals		
MTTF	[years]	1202
UL approval	UL approval number	I029
	File number UL	E174189
Mechanical data		
Weight	[g]	380
Dimensions	[mm]	Ø 23 / L = 142
Material	housing: PBT; sensor surface: titanium	
Materials (wetted parts)	PBT; titanium	
Process connection	Ø 23 mm	
Displays / operating elements		
Display	Function	1 x LED, red
	Function	1 x LED, green
Accessories		
Items supplied	Mounting clamp: 1, E40048	
Remarks		
Pack quantity	1 pcs.	

SL5102



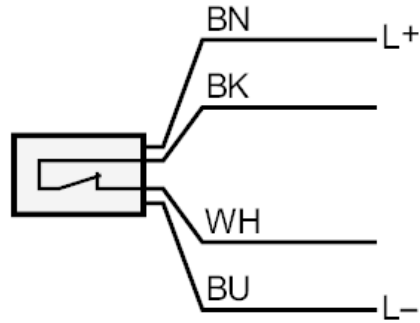
Airflow monitor

SLG23CEEKOG/N.C./24VDC/6M

Electrical connection

Cable: 6 m, PUR; 4 x 0.5 mm², PVC

Connection



BN =	Core colors :	brown
BU =		blue
BK =		black
WH =		white