

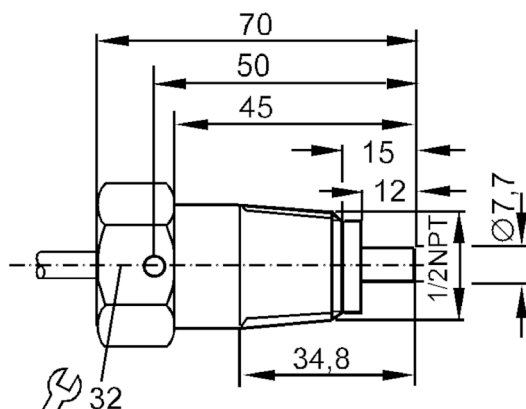
SF3020



Flow sensor for connection to an evaluation unit

SFN12ABBE1/6M

Article no longer available - archive entry



Product characteristics

Probe length L	[mm]	15
Process connection		1/2" NPT

Application

Application		CLASS I, DIV. 1, GROUPS A, B, C and D CLASS II / III, DIV. 1, GROUPS E, F and G
Medium temperature	[°C]	-25...100
Pressure rating	[bar]	30

Liquids

Application		CLASS I, DIV. 1, GROUPS A, B, C and D CLASS II / III, DIV. 1, GROUPS E, F and G
Medium temperature	[°C]	-25...100

Gases

Medium temperature	[°C]	-25...100
--------------------	------	-----------

Electrical data

Connection to control monitor		VS3000
-------------------------------	--	--------

Measuring/setting range

Probe length L	[mm]	15
Liquids		
Setting range	[cm/s]	3...300
Greatest sensitivity	[cm/s]	3...60
Gases		
Setting range	[cm/s]	200...2000
Greatest sensitivity	[cm/s]	200...800

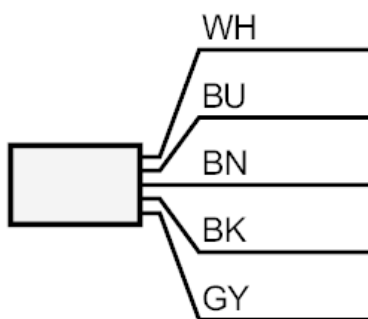
SF3020



Flow sensor for connection to an evaluation unit

SFN12ABBE1/6M

Accuracy / deviations		
Max. temperature gradient of medium	[K/min]	15
Reaction times		
Response time	[s]	1...10
Liquids		
Response time	[s]	1...10
Gases		
Response time	[s]	1...10
Operating conditions		
Protection		IP 67
Tests / approvals		
Shock resistance	DIN IEC 68-2-27	40 g (11 ms)
Vibration resistance	DIN IEC 68-2-6	10 g (55...2000 Hz)
Mechanical data		
Weight	[g]	559.5
Housing		Threaded type
Material		stainless steel (1.4571/316Ti)
Materials (wetted parts)		stainless steel (1.4571/316Ti)
Process connection		1/2" NPT
Installation length EL	[mm]	45
Remarks		
Pack quantity		1 pcs.
Electrical connection		
Cable: 6 m, silicone; Maximum cable length: 100 m; 5 x 0.34 mm ²		
Connection		



	Core colors :
BN =	brown
BU =	blue
BK =	black
WH =	white
GY =	grey