

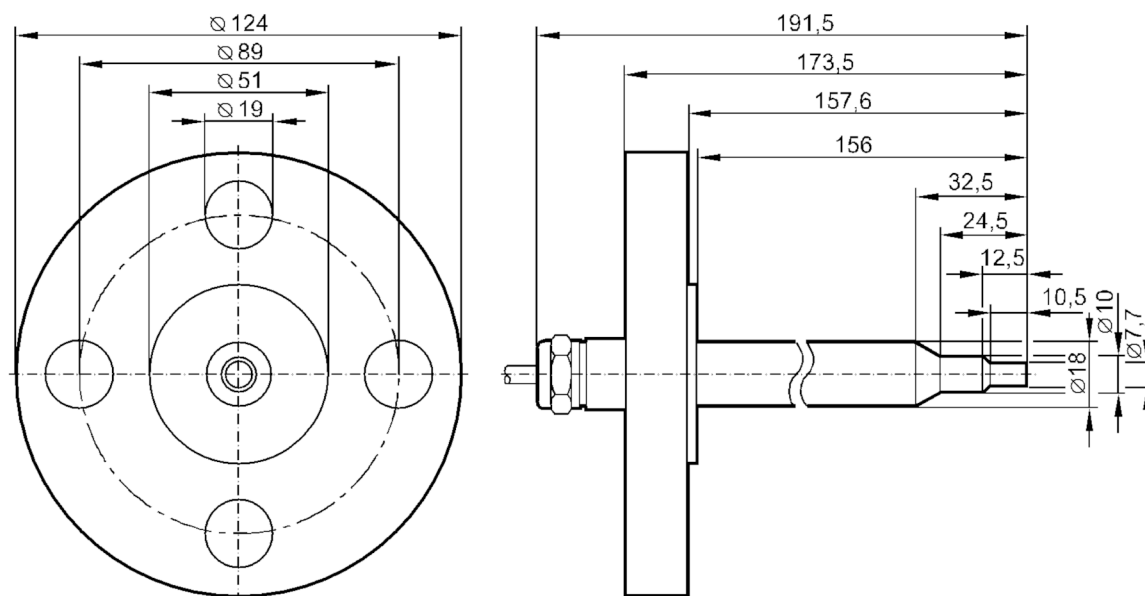
# SF0713



## Flow sensor for connection to an evaluation unit

SFG18ABBE1

Article no longer available - archive entry



### Product characteristics

Process connection	ANSIB 16.5 (1 in; 300 lb/sq.in)
--------------------	---------------------------------

### Application

Application	Ex zone 1
Medium temperature [°C]	-25...80
Pressure rating [bar]	30

### Liquids

Application	Ex zone 1
Medium temperature [°C]	-25...80

### Gases

Medium temperature [°C]	-25...80
-------------------------	----------

### Electrical data

Connection to control monitor	VS 0200 Exi
-------------------------------	-------------

### Measuring/setting range

#### Liquids

Setting range [cm/s]	3...300
Greatest sensitivity [cm/s]	3...60

#### Gases

Setting range [cm/s]	200...2000
Greatest sensitivity [cm/s]	200...800

### Accuracy / deviations

Max. temperature gradient of medium [K/min]	15
---	----

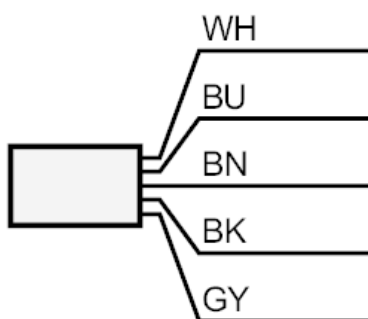
# SF0713



## Flow sensor for connection to an evaluation unit

SFG18ABBE1

Reaction times		
Response time	[s]	1...10
Liquids		
Response time	[s]	1...10
Gases		
Response time	[s]	1...10
Operating conditions		
Protection		IP 67
Mechanical data		
Housing		tubular
Dimensions	[mm]	Ø 18
Material		stainless steel (1.4571/316Ti )
Materials (wetted parts)		stainless steel (1.4571/316Ti )
Process connection		ANSIB 16.5 (1 in; 300 lb/sq.in)
Remarks		
Pack quantity		1 pcs.
Electrical connection		
Cable: 2 m, TPE-S; Maximum cable length: 100 m; 5 x 0.34 mm <sup>2</sup>		
Connection		



	Core colors :
BN =	brown
BU =	blue
BK =	black
WH =	white
GY =	grey