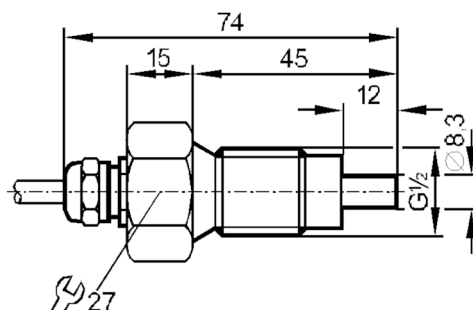




## Flow sensor for connection to an evaluation unit

SFR12AACE1

Article no longer available - archive entry



## Product characteristics

Process connection	G 1/2 external thread
--------------------	-----------------------

## Application

Application	Ex zone 1
Medium temperature [°C]	-25...80
Pressure rating [bar]	5

## Liquids

Application	Ex zone 1
Medium temperature [°C]	-25...80

## Electrical data

Connection to control monitor	VS 0200 Exi
-------------------------------	-------------

## Measuring/setting range

## Liquids

Setting range [cm/s]	0...60
Greatest sensitivity [cm/s]	0...20

## Accuracy / deviations

Max. temperature gradient of [K/min] medium	7
---	---

## Reaction times

Response time [s]	2...20
-------------------	--------

## Liquids

Response time [s]	2...20
-------------------	--------

## Operating conditions

Protection	IP 67
------------	-------

## Mechanical data

Housing	Threaded type
Material	PTFE
Materials (wetted parts)	PTFE
Process connection	G 1/2 external thread

## Remarks

Pack quantity	1 pcs.
---------------	--------

# SF0711



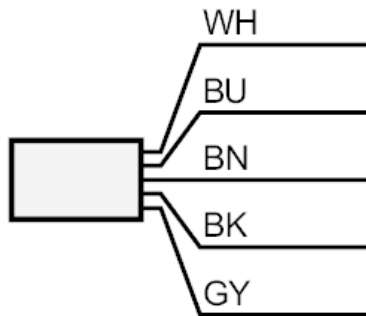
## Flow sensor for connection to an evaluation unit

SFR12AACE1

### Electrical connection

Cable: 2 m, TPE-S; Maximum cable length: 100 m; 5 x 0.34 mm<sup>2</sup>

### Connection



BN =	Core colors :	brown
BU =		blue
BK =		black
WH =		white
GY =		grey