



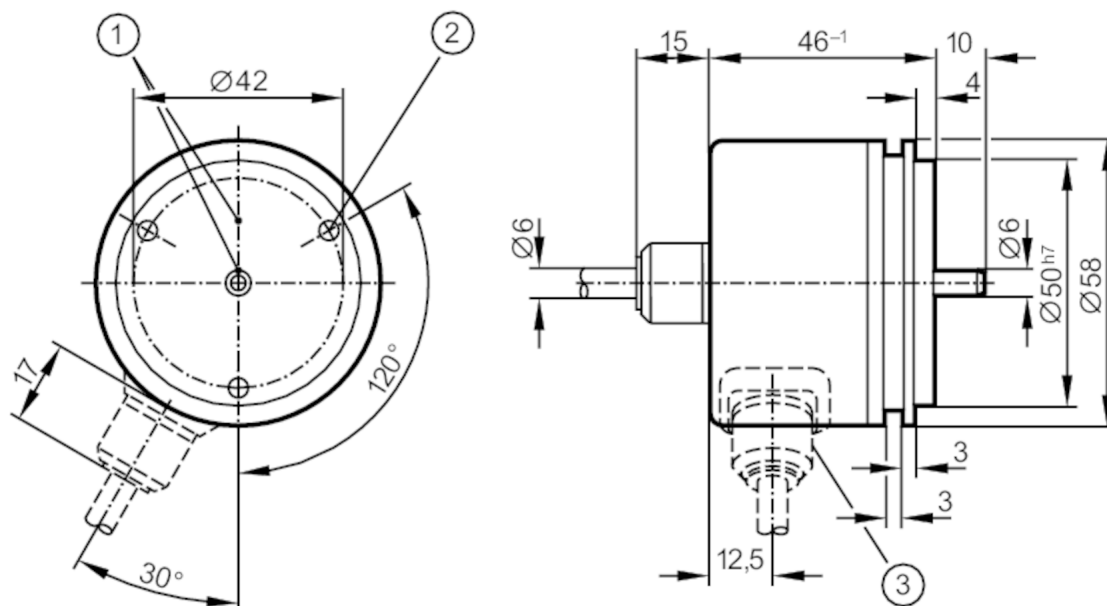
Incremental encoder with solid shaft

RU-1500-I05/S1

Article no longer available - archive entry

Alternative articles: RUP500 + E12460

When selecting an alternative article and accessories please note that technical data may differ!



- 1 reference mark
- 2 M4 Depth 5 mm



Product characteristics

Resolution	1500 resolution
Shaft design	solid shaft
Shaft diameter [mm]	6

Application

Function principle	incremental
--------------------	-------------

Electrical data

Operating voltage tolerance [%]	10
Operating voltage [V]	5 DC
Current consumption [mA]	150

Outputs

Electrical design	TTL
Max. current load per output [mA]	20
Switching frequency [kHz]	300
Phase difference A und B [°]	90

Measuring/setting range

Resolution	1500 resolution
------------	-----------------

Operating conditions

Ambient temperature [°C]	-30...100
--------------------------	-----------

RU1214



Incremental encoder with solid shaft

RU-1500-I05/S1

Note on ambient temperature	firmly laid cable: -30 °C
Storage temperature [°C]	-30...100
Max. relative air humidity [%]	98
Protection	IP 64

Tests / approvals

Shock resistance	100 g (6 ms)
Vibration resistance	10 g (55...2000 Hz)

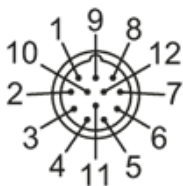
Mechanical data

Weight [g]	0.001
Dimensions [mm]	Ø 58 / L = 46
Material	aluminum
Max. revolution, mechanical [U/min]	12000
Max. starting torque [Nm]	1
Reference temperature [°C]	20
Shaft design	solid shaft
Shaft diameter [mm]	6
Shaft material	steel (1.4104)
Max. shaft load axial (at the shaft end) [N]	10
Max. shaft load radial (at the shaft end) [N]	20
Fixing flange	Synchro-flange

Electrical connection

Cable: 1 m, PUR; axial

Connector: 1 x M23 (ifm 1001.6)



1	B inverted
2	L+ sensor
3	0 index
4	0 index inverted
5	A
6	A inverted
screen	housing
7	error inverted
8	B
9	n.c.
10	0V (Un)
11	0V sensor
12	L+

RU1214

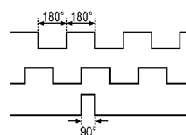


Incremental encoder with solid shaft

RU-1500-I05/S1

Diagrams and graphs

Pulse diagram



Direction of rotation clockwise (looking at the shaft)