

# RU1181



## Incremental encoder with solid shaft

RU-2500-I05/S1E

Article no longer available - archive entry



- 1 reference mark
- 2 M4 Depth 5 mm



### Product characteristics

Resolution	2500 resolution
Shaft design	solid shaft
Shaft diameter [mm]	6

### Electrical data

Operating voltage tolerance [%]	10
Operating voltage [V]	5 DC
Current consumption [mA]	150

### Outputs

Electrical design	TTL
Max. current load per output [mA]	20
Switching frequency [kHz]	300
Phase difference A und B [°]	90

### Measuring/setting range

Resolution	2500 resolution
------------	-----------------

### Operating conditions

Ambient temperature [°C]	-20...100
Storage temperature [°C]	-30...100
Max. relative air humidity [%]	98
Protection	IP 66

# RU1181



## Incremental encoder with solid shaft

RU-2500-I05/S1E

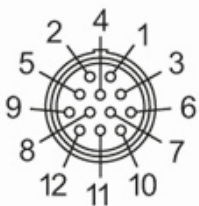
Tests / approvals	
Shock resistance	100 g (6 ms)
Vibration resistance	10 g (55...2000 Hz)
Mechanical data	
Dimensions [mm]	Ø 58 / L = 46
Material	aluminum
Max. revolution, mechanical [U/min]	12000
Max. starting torque [Nm]	1
Reference temperature torque [°C]	20
Shaft design	solid shaft
Shaft diameter [mm]	6
Shaft material	steel (1.4104)
Max. shaft load axial (at the shaft end) [N]	10
Max. shaft load radial (at the shaft end) [N]	20
Fixing flange	Synchro-flange

### Electrical connection

Cable: 1 m, PUR; axial

Pin 1	A
Pin 2	A inverted
Pin 3	B
Pin 4	B inverted
Pin 5	+5V sensor
Pin 6	0 index
Pin 7	0 index inverted
Pin 9	+5V (Up)
Pin 10	0V sensor
Pin 11	housing
Pin 12	0V (Un)

Connector: 1 x Bajonett (ifm 1000.2)



# RU1181

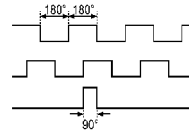


## Incremental encoder with solid shaft

RU-2500-I05/S1E

### Diagrams and graphs

Pulse diagram



Output A

Output B

0 index

[Article no longer available - archive entry](#)