

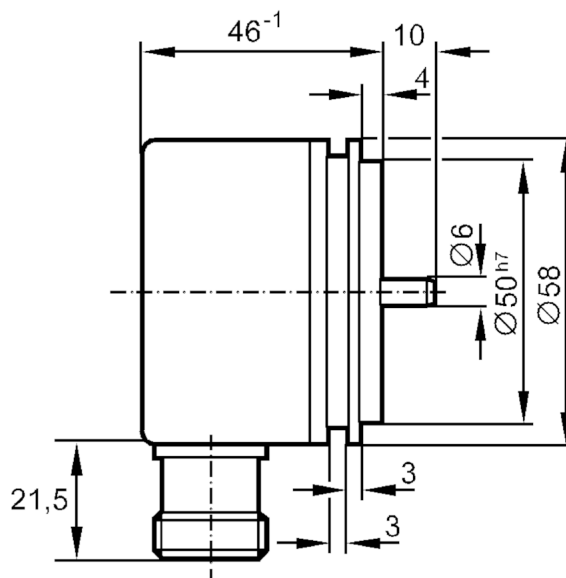
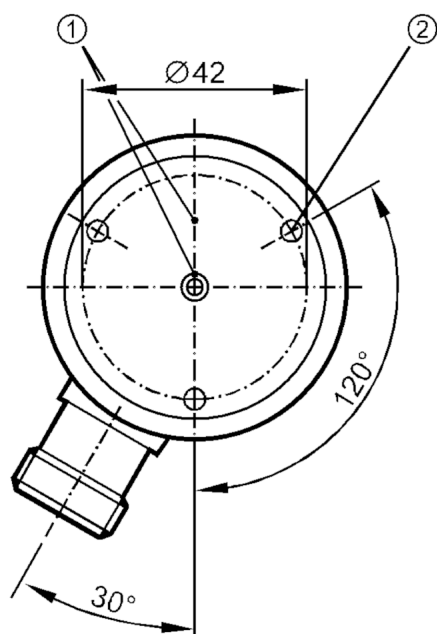
RU1094



Incremental encoder with solid shaft

RU-0100-I05/K

Article no longer available - archive entry



- | | |
|---|----------------|
| 1 | reference mark |
| 2 | M4 Depth 5 mm |



Product characteristics

Resolution	100 resolution
Shaft design	solid shaft
Shaft diameter [mm]	6

Electrical data

Operating voltage tolerance	[%]	10
Operating voltage	[V]	5 DC
Current consumption	[mA]	150

Outputs

Electrical design	TTL
Max. current load per output [mA]	20
Switching frequency [kHz]	300
Phase difference A und B [°]	90

Measuring/setting range

Resolution	100 resolution
------------	----------------

Operating conditions

Ambient temperature	[°C]	-20...100
Storage temperature	[°C]	-30...100
Max. relative air humidity	[%]	98
Protection		IP 64

RU1094



Incremental encoder with solid shaft

RU-0100-I05/K

Tests / approvals

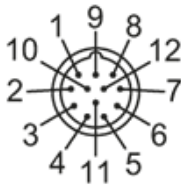
Shock resistance	100 g (6 ms)
Vibration resistance	15 g (55...2000 Hz)

Mechanical data

Dimensions [mm]	Ø 58 / L = 56
Material	aluminum
Max. revolution, mechanical [U/min]	12000
Max. starting torque [Nm]	1
Reference temperature torque [°C]	20
Shaft design	solid shaft
Shaft diameter [mm]	6
Shaft material	steel (1.4104)
Max. shaft load axial (at the shaft end) [N]	10
Max. shaft load radial (at the shaft end) [N]	20
Fixing flange	Synchro-flange

Electrical connection

Connector: 1 x M23 (ifm 1001.4), radial



brown	A
green	A inverted
grey	B
pink	B inverted
red	0 index
black	0 index inverted
blue	L+ sensor
white	0V sensor
brown/green	L+ (Up)
white/green	0V (Un)
lilac	error inverted
screen	housing

Diagrams and graphs

Pulse diagram	<p>Direction of rotation clockwise (looking at the shaft)</p>
---------------	---