

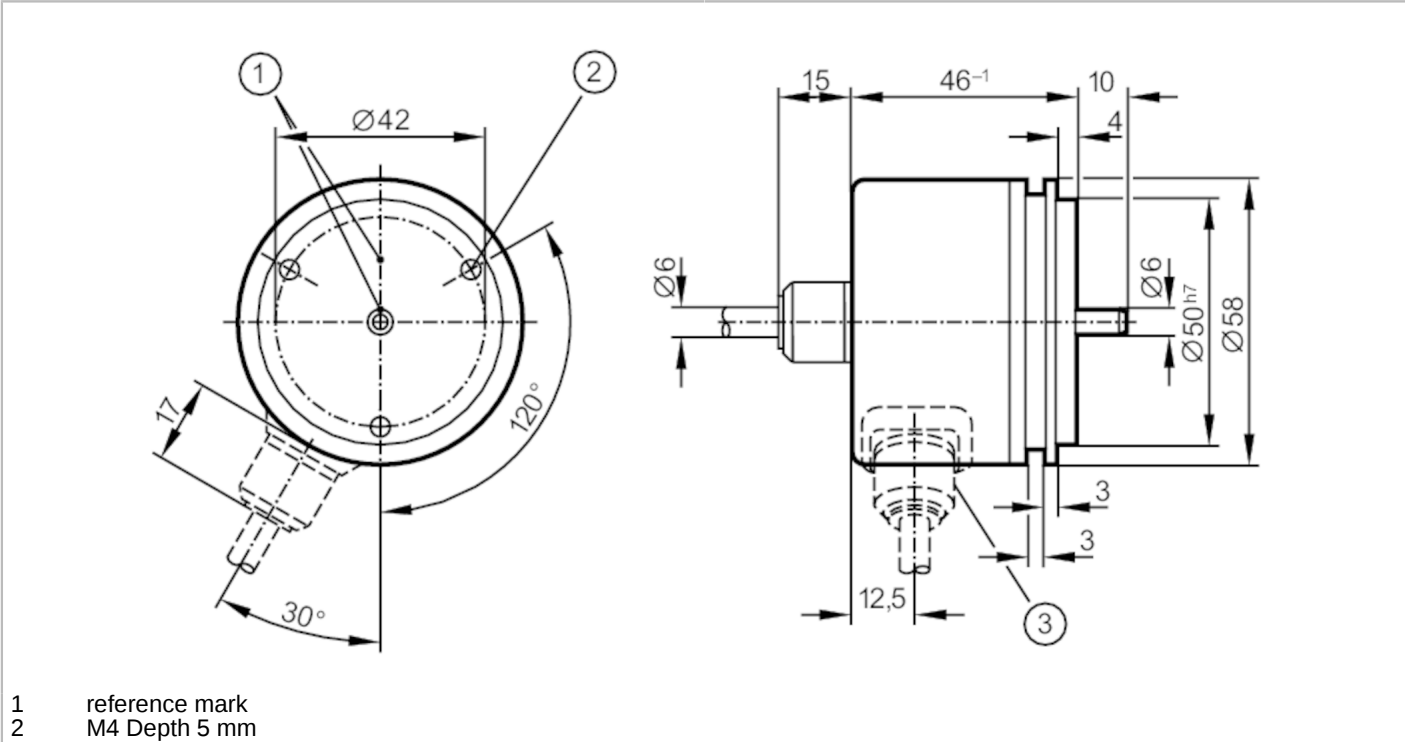
# RU1093



## Incremental encoder with solid shaft

RU-1000-I05/N2

Article no longer available - archive entry



- 1 reference mark
- 2 M4 Depth 5 mm



Product characteristics		
Resolution		1000 resolution
Shaft design		solid shaft
Shaft diameter	[mm]	6
Electrical data		
Operating voltage tolerance	[%]	10
Operating voltage	[V]	5 DC
Current consumption	[mA]	150
Outputs		
Electrical design		TTL
Max. current load per output	[mA]	20
Switching frequency	[kHz]	300
Phase difference A und B	[°]	90
Measuring/setting range		
Resolution		1000 resolution
Operating conditions		
Ambient temperature	[°C]	-20...100
Storage temperature	[°C]	-30...100
Protection		IP 64
Tests / approvals		
Shock resistance		100 g (6 ms)

# RU1093



## Incremental encoder with solid shaft

RU-1000-I05/N2

Vibration resistance	10 g (55...2000 Hz)
----------------------	---------------------

### Mechanical data

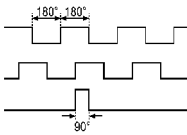
Dimensions	[mm]	Ø 58 / L = 46
Material		aluminum
Max. revolution, mechanical	[U/min]	12000
Max. starting torque	[Nm]	1
Reference temperature torque	[°C]	20
Shaft design		solid shaft
Shaft diameter	[mm]	6
Shaft material		steel (1.4104)
Max. shaft load axial (at the shaft end)	[N]	10
Max. shaft load radial (at the shaft end)	[N]	20
Fixing flange		Synchro-flange

### Electrical connection

Cable: 2 m, PUR; radial

brown	A
green	A inverted
grey	B
pink	B inverted
red	0 index
black	0 index inverted
blue	L+ sensor
white	0V sensor
brown/green	L+ (Up)
white/green	0V (Un)
lilac	error inverted
screen	housing

### Diagrams and graphs

Pulse diagram	 <p>Direction of rotation clockwise (looking at the shaft)</p>
---------------	--