

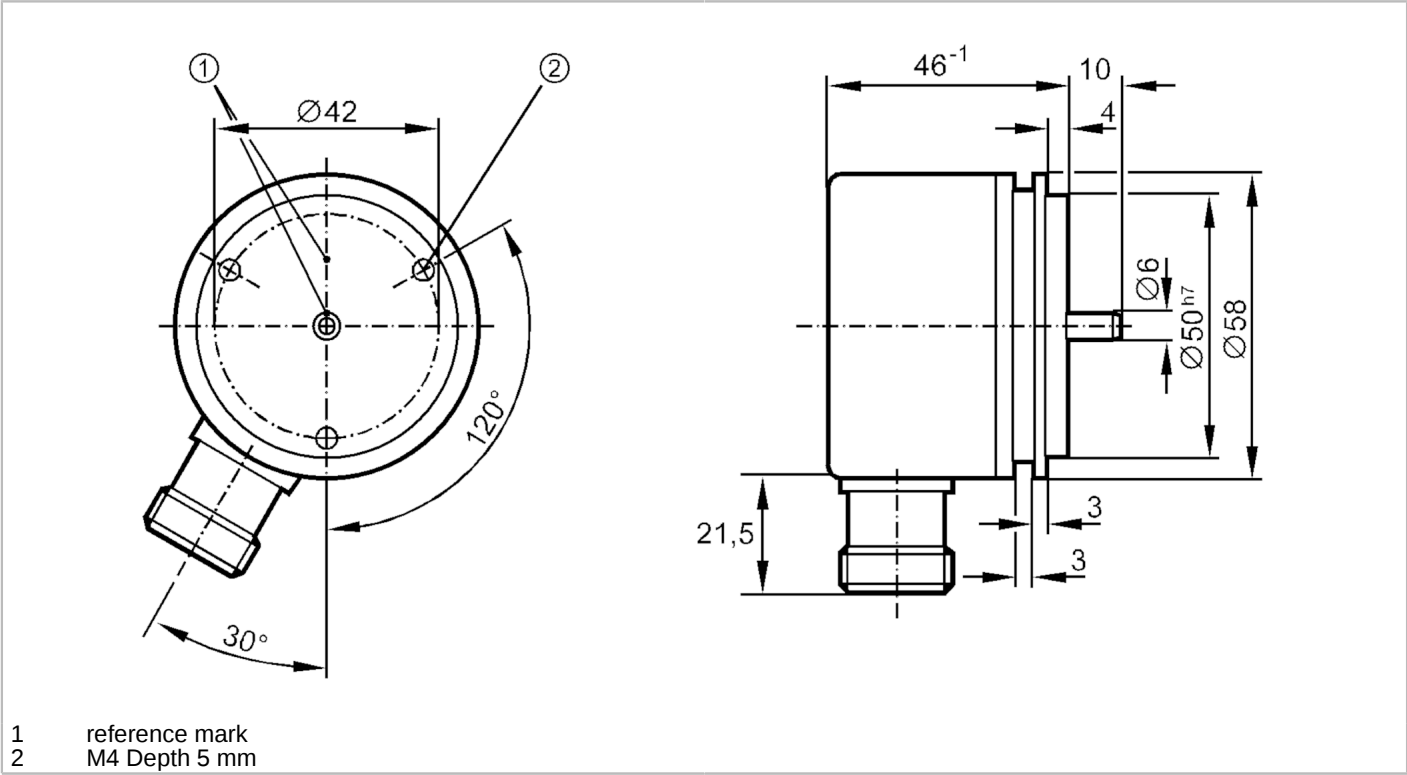
# RU1084



## Incremental encoder with solid shaft

RU-1500-I05/K

Article no longer available - archive entry



Product characteristics		
Resolution		1500 resolution
Shaft design		solid shaft
Shaft diameter	[mm]	6
Electrical data		
Operating voltage tolerance	[%]	10
Operating voltage	[V]	5 DC
Current consumption	[mA]	150
Outputs		
Electrical design		TTL
Max. current load per output	[mA]	20
Switching frequency	[kHz]	300
Phase difference A und B	[°]	90
Measuring/setting range		
Resolution		1500 resolution
Operating conditions		
Ambient temperature	[°C]	-20...100
Storage temperature	[°C]	-30...100
Max. relative air humidity	[%]	98
Protection		IP 64

# RU1084



## Incremental encoder with solid shaft

RU-1500-I05/K

### Tests / approvals

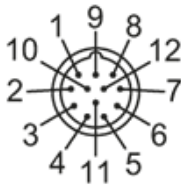
Shock resistance	100 g (6 ms)
Vibration resistance	15 g (55...2000 Hz)

### Mechanical data

Dimensions [mm]	Ø 58 / L = 56
Material	aluminum
Max. revolution, mechanical [U/min]	12000
Max. starting torque [Nm]	1
Reference temperature torque [°C]	20
Shaft design	solid shaft
Shaft diameter [mm]	6
Shaft material	steel (1.4104)
Max. shaft load axial (at the shaft end) [N]	10
Max. shaft load radial (at the shaft end) [N]	20
Fixing flange	Synchro-flange

### Electrical connection

Connector: 1 x M23 (ifm 1001.4), radial



brown	A
green	A inverted
grey	B
pink	B inverted
red	0 index
black	0 index inverted
blue	L+ sensor
white	0V sensor
brown/green	L+ (Up)
white/green	0V (Un)
lilac	error inverted
screen	housing

### Diagrams and graphs

Pulse diagram	<p>Direction of rotation clockwise (looking at the shaft)</p>
---------------	---