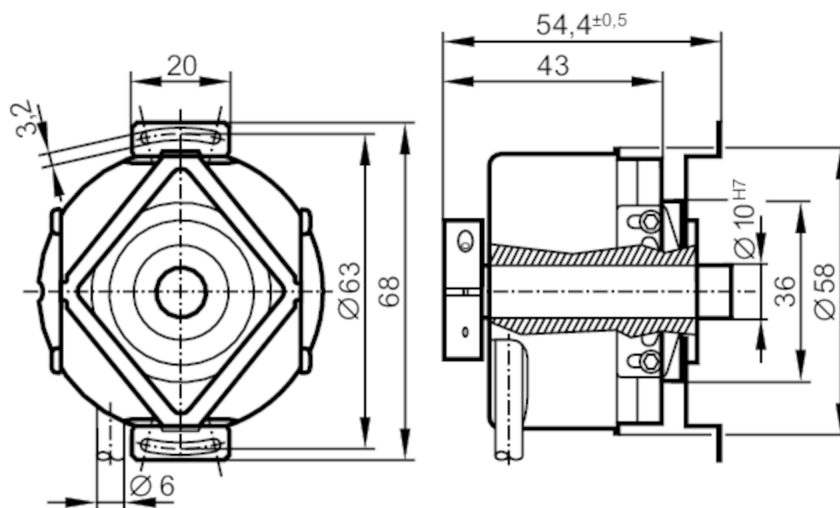




## Incremental encoder with hollow shaft

RO-2048-I24/N11

Article no longer available - archive entry



## Product characteristics

Resolution	2048 resolution
Shaft design	continuous hollow shaft
Shaft diameter [mm]	10

## Electrical data

Operating voltage [V]	10...30 DC
Current consumption [mA]	< 150

## Outputs

Electrical design	HTL
Max. current load per output [mA]	50
Switching frequency [kHz]	300
Type of short-circuit protection	< 60 s
Phase difference A und B [°]	90

## Measuring/setting range

Resolution	2048 resolution
------------	-----------------

## Operating conditions

Ambient temperature [°C]	-30...85
Note on ambient temperature	firmly laid cable: -30 °C
Max. relative air humidity [%]	98
Protection	IP 64; (on the housing: IP 66; on the shaft: IP 64)

## Tests / approvals

Shock resistance	200 g
Vibration resistance	30 g

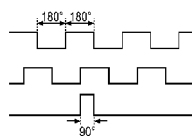


## Incremental encoder with hollow shaft

RO-2048-I24/N11

Mechanical data		
Dimensions	[mm]	Ø 58 / L = 54.4
Material		aluminum
Max. revolution, mechanical	[U/min]	12000; (when using both shaft clamping rings)
Max. starting torque	[Nm]	2.5
Reference temperature torque	[°C]	20
Shaft design		continuous hollow shaft
Shaft diameter	[mm]	10
Shaft fit		H7
Shaft material		stainless steel
Installation depth/shaft	[mm]	10
Max. axial shaft misalignment	[mm]	1; (max. radial shaft alignment: ± 0,05 mm)

Electrical connection		
Cable: 1 m, PUR; radial, can also be used axially		
brown	A	
green	A inverted	
grey	B	
pink	B inverted	
red	0 index	
black	0 index inverted	
blue	L+ sensor	
white	0V sensor	
brown/green	L+ (Up)	
white/green	0V (Un)	
screen	housing	
lilac	error inverted	

Diagrams and graphs	
Pulse diagram	 <p>Direction of rotation clockwise (looking at the shaft)</p>