

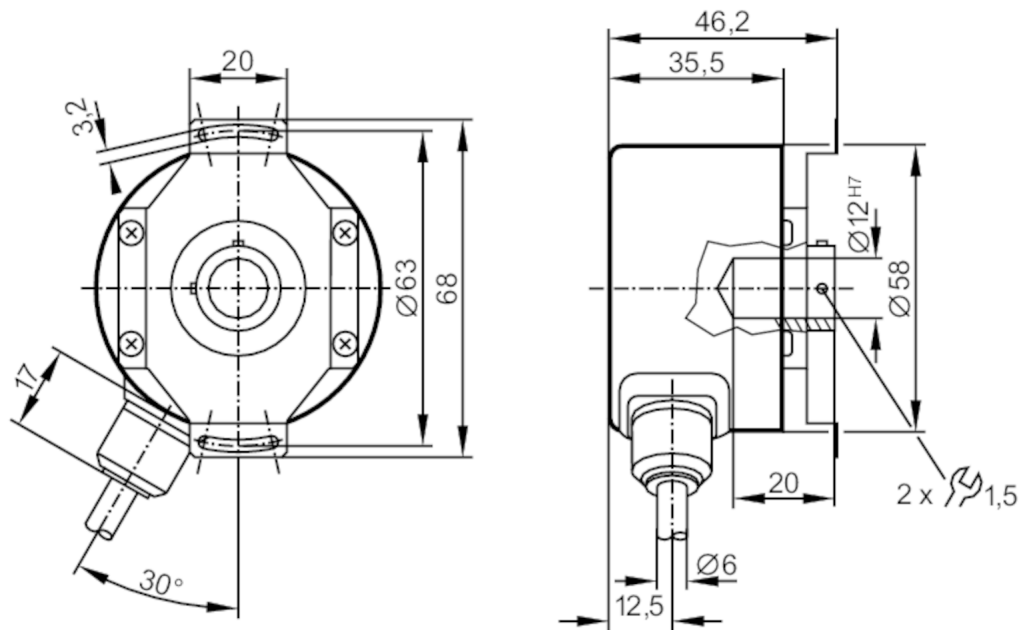
# RO1367



## Incremental encoder with hollow shaft

RO-4096-I05/N1U

Article no longer available - archive entry



### Product characteristics

Resolution	4096 resolution
Shaft design	hollow shaft open to one side
Shaft diameter [mm]	12

### Electrical data

Operating voltage tolerance [%]	10
Operating voltage [V]	5 DC
Current consumption [mA]	< 150

### Outputs

Electrical design	TTL
Max. current load per output [mA]	20
Switching frequency [kHz]	300
Phase difference A und B [°]	90

### Measuring/setting range

Resolution	4096 resolution
------------	-----------------

### Operating conditions

Ambient temperature [°C]	-30...100
Storage temperature [°C]	-30...100
Max. relative air humidity [%]	98
Protection	IP 64

### Tests / approvals

Shock resistance	100 g (6 ms)
------------------	--------------

# RO1367



## Incremental encoder with hollow shaft

RO-4096-I05/N1U

Vibration resistance	10 g (55...2000 Hz)
----------------------	---------------------

### Mechanical data

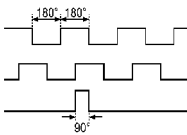
Dimensions	[mm]	Ø 58 / L = 35.5
Material		aluminum
Max. revolution, mechanical	[U/min]	12000
Max. starting torque	[Nm]	2.5
Reference temperature torque	[°C]	20
Shaft design		hollow shaft open to one side
Shaft diameter	[mm]	12
Shaft fit		H7
Shaft material		stainless steel
Installation depth/shaft	[mm]	10
Max. axial shaft misalignment	[mm]	1; (max. radial shaft alignment: ± 0,05 mm)

### Electrical connection

Cable: 1 m, PUR; radial

brown	A
green	A inverted
grey	B
pink	B inverted
red	0 index
black	0 index inverted
blue	L+ sensor
white	0V sensor
brown/green	L+ (Up)
white/green	0V (Un)
lilac	error inverted
screen	housing

### Diagrams and graphs

Pulse diagram	 <p>Direction of rotation clockwise (looking at the shaft)</p>
---------------	--