



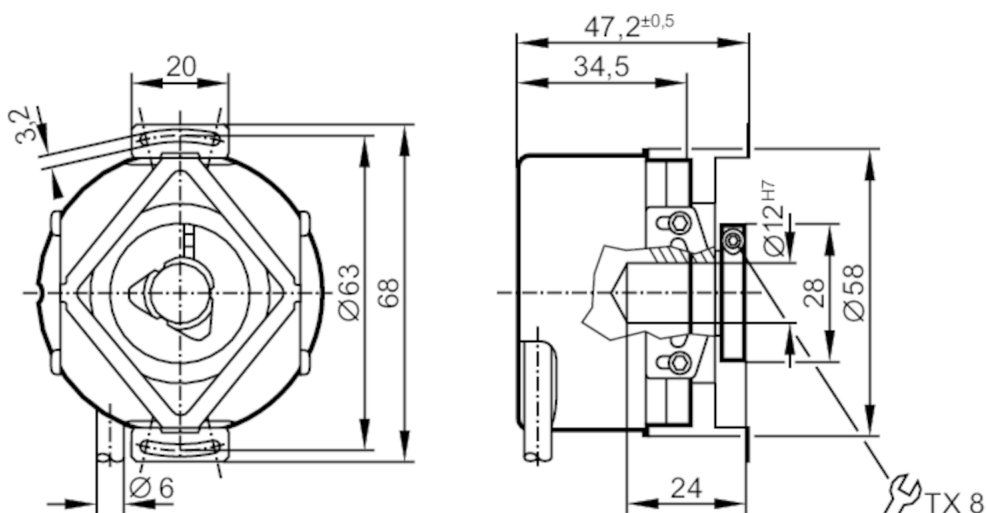
## Incremental encoder with hollow shaft

RO-0500-I05/N1U

Article no longer available - archive entry

Alternative articles: RO3501

When selecting an alternative article and accessories please note that technical data may differ!



## Product characteristics

Resolution	500 resolution
Shaft design	hollow shaft open to one side
Shaft diameter [mm]	12

## Application

Function principle	incremental
--------------------	-------------

## Electrical data

Operating voltage tolerance [%]	10
Operating voltage [V]	5 DC
Current consumption [mA]	< 120

## Outputs

Electrical design	TTL
Max. current load per output [mA]	20
Switching frequency [kHz]	300
Phase difference A und B [°]	90

## Measuring/setting range

Resolution	500 resolution
------------	----------------

## Operating conditions

Ambient temperature [°C]	-40...100
Max. relative air humidity [%]	98
Protection	IP 64; (on the housing: IP 67; on the shaft: IP 64)



## Incremental encoder with hollow shaft

RO-0500-I05/N1U

## Tests / approvals

Shock resistance	200 g
Vibration resistance	30 g

## Mechanical data

Weight [g]	461.2
Dimensions [mm]	Ø 58 / L = 35.5
Material	aluminum
Max. revolution, mechanical [U/min]	12000
Max. starting torque [Nm]	1
Reference temperature torque [°C]	20
Shaft design	hollow shaft open to one side
Shaft diameter [mm]	12
Shaft fit	H7
Shaft material	stainless steel
Installation depth/shaft [mm]	10
Max. axial shaft misalignment [mm]	1; (max. radial shaft alignment: ± 0,05 mm)

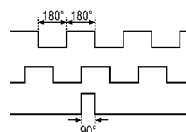
## Electrical connection

Cable: 1 m, PUR; Maximum cable length: 100 m; radial, can also be used axially

brown	A
green	A inverted
grey	B
pink	B inverted
red	0 index
black	0 index inverted
blue	L+ sensor
white	0V sensor
brown/green	L+ (Up)
white/green	0V (Un)
lilac	error inverted
screen	housing

## Diagrams and graphs

Pulse diagram



Direction of rotation clockwise (looking at the shaft)