

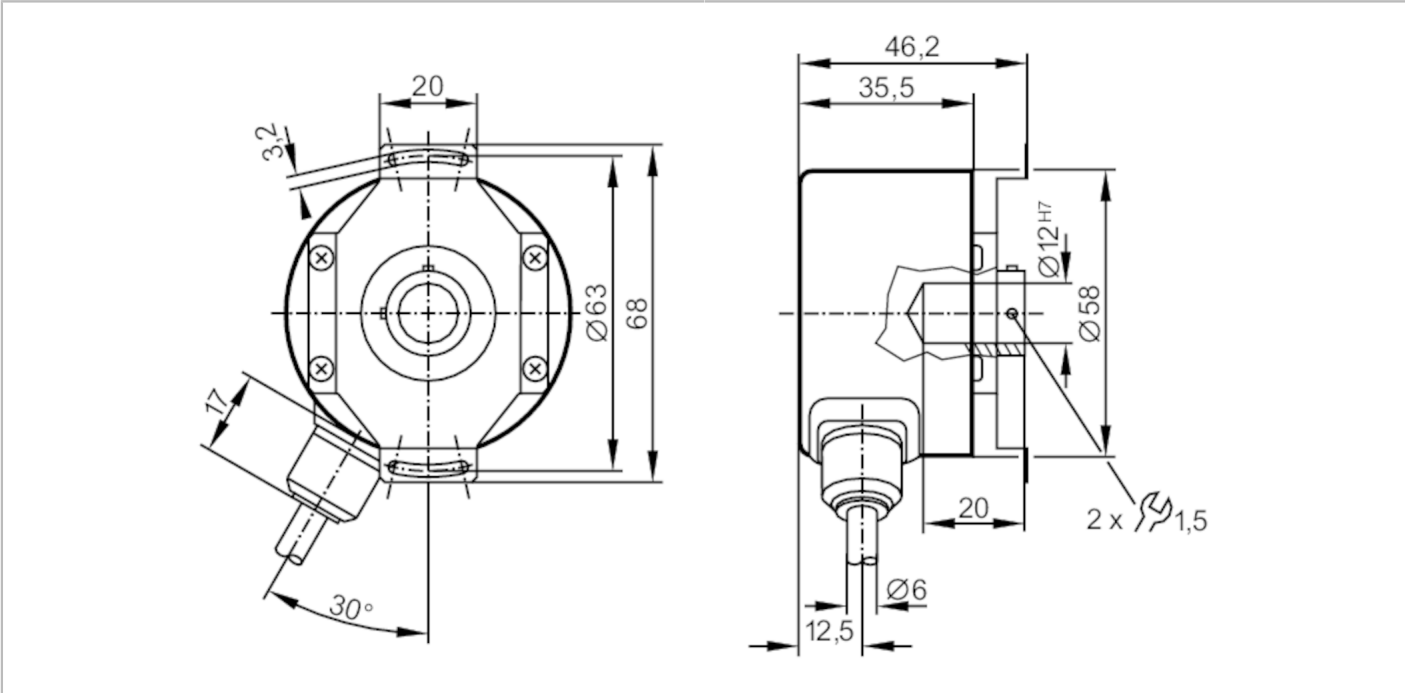
RO1354



Incremental encoder with hollow shaft

RO-1000-I05/N18

Article no longer available - archive entry



Product characteristics		
Resolution		1000 resolution
Shaft design		hollow shaft open to one side
Shaft diameter	[mm]	12
Electrical data		
Operating voltage tolerance	[%]	10
Operating voltage	[V]	5 DC
Current consumption	[mA]	< 150
Outputs		
Electrical design		TTL
Max. current load per output	[mA]	20
Switching frequency	[kHz]	300
Phase difference A und B	[°]	90
Measuring/setting range		
Resolution		1000 resolution
Operating conditions		
Ambient temperature	[°C]	-30...100
Storage temperature	[°C]	-30...100
Max. relative air humidity	[%]	98
Protection		IP 64
Tests / approvals		
Shock resistance		100 g (6 ms)

RO1354



Incremental encoder with hollow shaft

RO-1000-I05/N18

Vibration resistance	10 g (55...2000 Hz)
----------------------	---------------------

Mechanical data

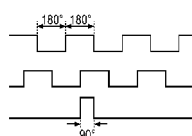
Dimensions	[mm]	Ø 58 / L = 35.5
Material		aluminum
Max. revolution, mechanical	[U/min]	12000
Max. starting torque	[Nm]	2.5
Reference temperature	[°C]	20
Shaft design		hollow shaft open to one side
Shaft diameter	[mm]	12
Shaft fit		H7
Shaft material		stainless steel
Installation depth/shaft	[mm]	10
Max. axial shaft misalignment	[mm]	1; (max. radial shaft alignment: ± 0,05 mm)

Electrical connection

Cable: 1 m, PUR; radial

brown	A
green	A inverted
grey	B
pink	B inverted
red	0 index
black	0 index inverted
blue	L+ sensor
white	0V sensor
brown/green	L+ (Up)
white/green	0V (Un)
lilac	error inverted
screen	housing

Diagrams and graphs

Pulse diagram	 <p>Direction of rotation clockwise (looking at the shaft)</p>
---------------	--