

RM6114



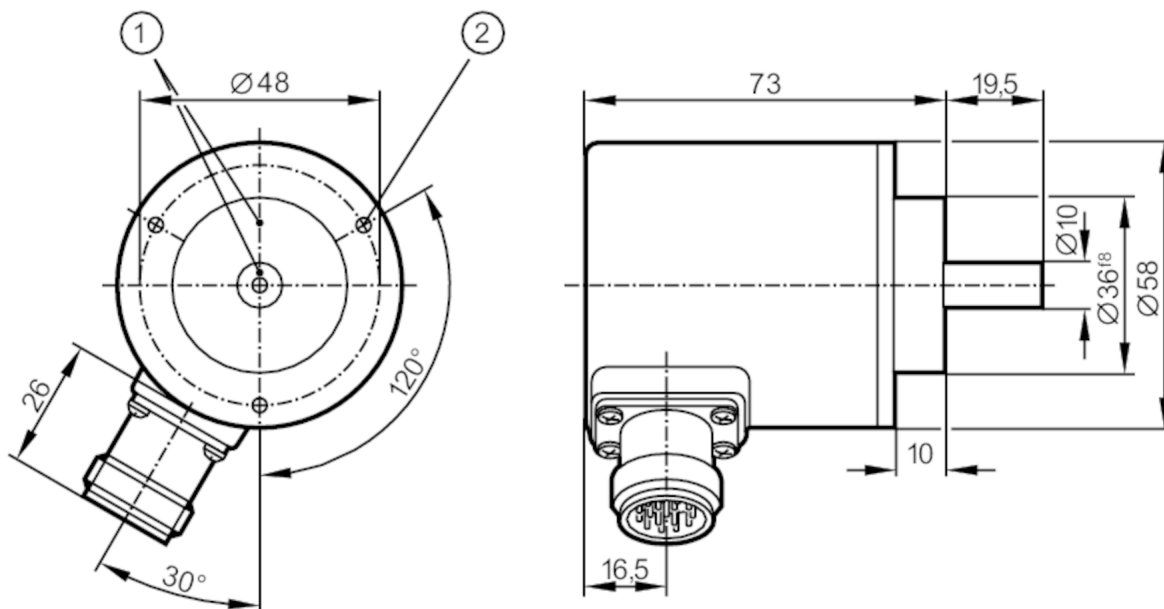
Absolute multiturn encoder with solid shaft

RM-8192-P24/K E

Article no longer available - archive entry

Alternative articles: RM6110

When selecting an alternative article and accessories please note that technical data may differ!



- 1 reference mark
- 2 M4 Depth 5 mm
- 3 M3 Depth 5 mm



Product characteristics

Resolution	configurable resolution; 8192 steps; 4096 revolutions; 25 bit
Communication interface	SSI data interface
Shaft design	solid shaft
Shaft diameter [mm]	10

Electrical data

Operating voltage [V]	10...30 DC
Current consumption [mA]	< 300
Max. revolution electrical [U/min]	6000

Outputs

Code	Dual code or Gray code; (configurable; time constant for position calculation: 0,5 ms)
------	----------------------------------------------------------------------------------------

Measuring/setting range

Resolution	configurable resolution; 8192 steps; 4096 revolutions; 25 bit
------------	---------------------------------------------------------------

Interfaces

Communication interface	SSI data interface
-------------------------	--------------------

Operating conditions

Ambient temperature [°C]	-20...70
Storage temperature [°C]	-30...80

RM6114



Absolute multiturn encoder with solid shaft

RM-8192-P24/K E

Protection	IP 66
------------	-------

Tests / approvals

Shock resistance	100 g (6 ms)
Vibration resistance	10 g (55...2000 Hz)

Mechanical data

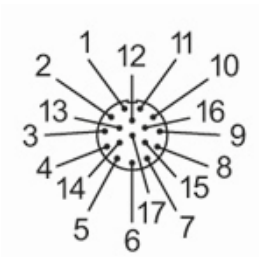
Dimensions [mm]	Ø 58 / L = 73
Material	aluminum
Max. revolution, mechanical [U/min]	10000
Max. starting torque [Nm]	1
Reference temperature torque [°C]	20
Shaft design	solid shaft
Shaft diameter [mm]	10
Shaft material	steel (1.4104)
Max. shaft load axial (at the shaft end) [N]	10
Max. shaft load radial (at the shaft end) [N]	20

Remarks

Remarks	For programming, a PC with Windows 3.1™ or higher as well as the programming software are needed.
---------	---------------------------------------------------------------------------------------------------

Electrical connection

Connector: 1 x M23 (ifm 1001.11), radial; Maximum cable length: 100 m



1	TxD
2	Direction of rotation (10...30V)
3	error inverted
4	RxD
5	Preset 1 (10...30V / 1ms)
6	Preset 2 (10...30V / 1ms)
7	10...30V Up
8	clock
9	clock inverted
10	0V Un
11	screen
12	B (+)
13	B (-)
14	data
15	A (+)
16	A (-)
17	data inverted

RM6114

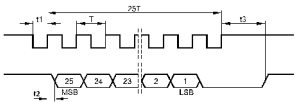


Absolute multiturn encoder with solid shaft

RM-8192-P24/K E

Diagrams and graphs

Pulse diagram



clock
data