

RM3004



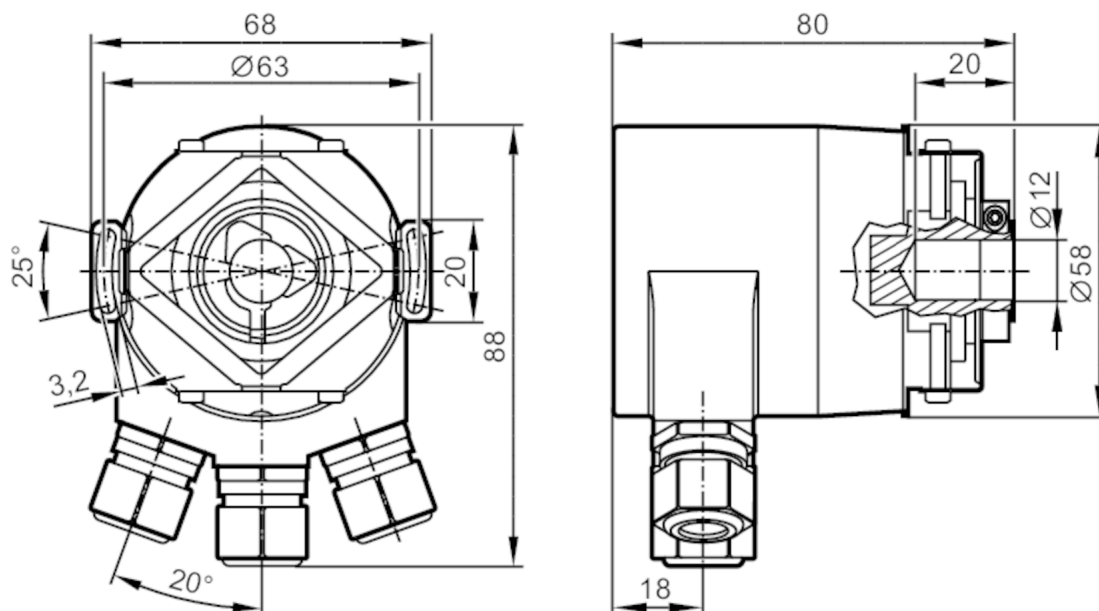
Absolute multiturn encoder with hollow shaft

RM-8192-E24/ U

Article no longer available - archive entry

Alternative articles: RM3008

When selecting an alternative article and accessories please note that technical data may differ!



Product characteristics

Resolution	8192 steps; 4096 revolutions; 25 bit
Communication interface	PROFIBUS DP
Shaft design	hollow shaft open to one side
Shaft diameter [mm]	12

Application

Function principle	absolute
Revolution type	multiturn

Electrical data

Operating voltage [V]	10...30 DC
Current consumption [mA]	< 150
Max. revolution electrical [U/min]	6000

Outputs

Code	Dual-code
------	-----------

Measuring/setting range

Resolution	8192 steps; 4096 revolutions; 25 bit
------------	--------------------------------------

Software / programming

Parameter setting options	counting direction of the code values; Resolution; Zero point; limit switches HI and LO; motion indicator; separation multiturn/singleturn
Diagnostic functions	alarms; warnings; status; serial number of the encoder



Absolute multiturn encoder with hollow shaft

RM-8192-E24/ U

Addressing		address selector switch; 0...126	
Interfaces			
Communication interface		PROFIBUS DP	
PROFIBUS DP			
Transmission standard		DPV0 Class 2 / DPV2 Class 4 (EN50170)	
Transmission rate		...12 Mbit/s	
Operating conditions			
Ambient temperature		[°C]	-40...70
Protection		IP 64; (on the housing: IP 67; on the shaft: IP 64)	
Tests / approvals			
Shock resistance			100 g (6 ms)
Vibration resistance			10 g (55...2000 Hz)
Mechanical data			
Weight		[g]	574.2
Material			aluminum
Max. starting torque		[Nm]	1
Reference temperature torque		[°C]	20
Shaft design			hollow shaft open to one side
Shaft diameter		[mm]	12
Shaft material			steel (1.4104)
Max. shaft load axial (at the shaft end)		[N]	10
Max. shaft load radial (at the shaft end)		[N]	20
Max. axial shaft misalignment		[mm]	1
Fixing flange			Stator coupling
Electrical connection			
Terminal strip in the terminal chamber: ; Maximum cable length: 100 m; 400 m (1.5 Mb/s)			