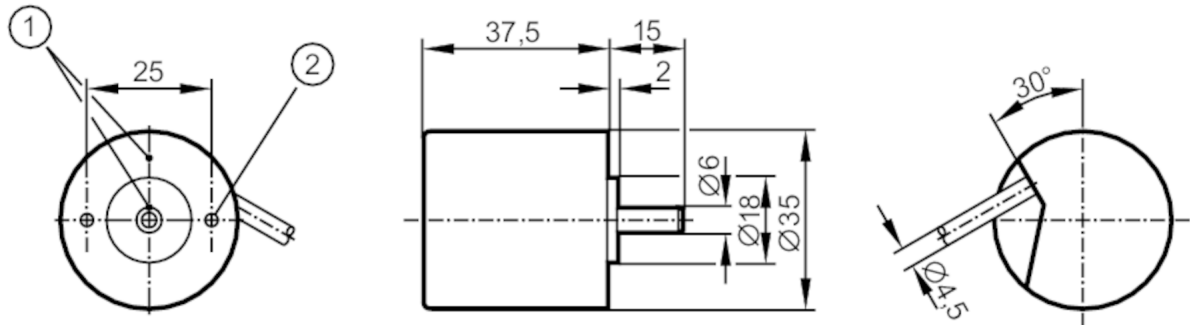


Incremental encoder with solid shaft

RB-0250-I24/L3I

Article to be discontinued



- 1 reference mark
- 2 M3 Depth 5 mm

Product characteristics

Resolution	250 resolution
Shaft design	solid shaft
Shaft diameter [mm]	6

Electrical data

Operating voltage [V]	10...30 DC
Current consumption [mA]	150

Outputs

Electrical design	HTL
Max. current load per output [mA]	50
Switching frequency [kHz]	160
Type of short-circuit protection	< 60 s
Phase difference A und B [°]	90

Measuring/setting range

Resolution	250 resolution
------------	----------------

Operating conditions

Ambient temperature [°C]	-30...70
Ambient temperature (moving) [°C]	-10...70
Max. relative air humidity [%]	75
Protection	IP 66

Tests / approvals

Shock resistance	100 g (6 ms)
Vibration resistance	10 g (55...2000 Hz)
MTTF [years]	190

Mechanical data

Weight [g]	319.6
Dimensions [mm]	Ø 35 / L = 52.5

RB6061



Incremental encoder with solid shaft

RB-0250-I24/L3I

Material	aluminum
Max. revolution, mechanical [U/min]	10000
Max. starting torque [Nm]	1
Reference temperature torque [°C]	20
Shaft design	solid shaft
Shaft diameter [mm]	6
Shaft material	steel (1.4104)
Max. shaft load axial (at the shaft end) [N]	5
Max. shaft load radial (at the shaft end) [N]	10

Remarks

Pack quantity	1 pcs.
---------------	--------

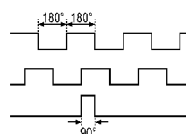
Electrical connection

Cable: 3 m, PVC

white	A
green	B
yellow	0 index
brown	10...30V (Up)
grey	0V (Un)
screen	housing

Diagrams and graphs

Pulse diagram



Direction of rotation clockwise (looking at the shaft)