



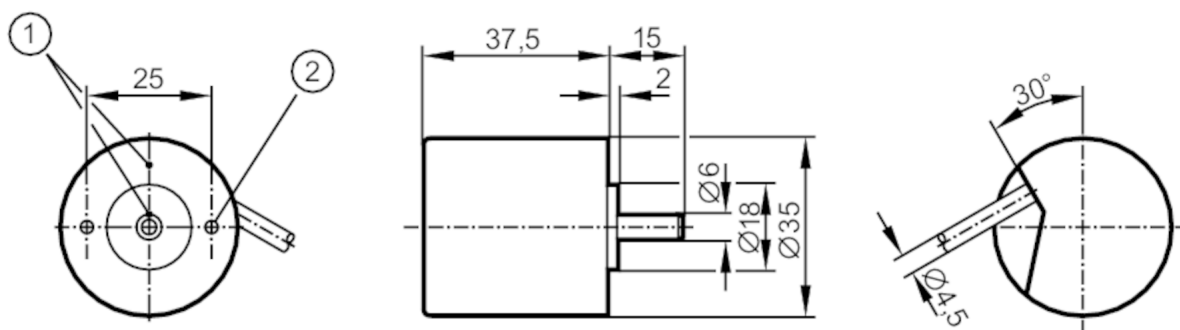
## Incremental encoder with solid shaft

RB-0005-I24/L2

Article to be discontinued

Alternative articles: RB3500

When selecting an alternative article and accessories please note that technical data may differ!



- 1 reference mark
- 2 M3 Depth 5 mm



### Product characteristics

Resolution	5 resolution
Shaft design	solid shaft
Shaft diameter [mm]	6

### Application

Function principle	incremental
--------------------	-------------

### Electrical data

Operating voltage [V]	10...30 DC
Current consumption [mA]	150

### Outputs

Electrical design	HTL
Max. current load per output [mA]	50
Switching frequency [kHz]	160
Type of short-circuit protection	< 60 s
Phase difference A und B [°]	90

### Measuring/setting range

Resolution	5 resolution
------------	--------------

### Operating conditions

Ambient temperature [°C]	-40...70
Note on ambient temperature	firmly laid cable
Max. relative air humidity [%]	75; (briefly: 95 %)
Protection	IP 64



## Incremental encoder with solid shaft

RB-0005-I24/L2

## Tests / approvals

Shock resistance		100 g (6 ms)
Vibration resistance		10 g (55...2000 Hz)
MTTF	[years]	190

## Mechanical data

Weight	[g]	270
Dimensions	[mm]	Ø 35 / L = 52.5
Material		aluminum
Max. revolution, mechanical [U/min]		10000
Max. starting torque	[Nm]	1
Reference temperature torque	[°C]	20
Shaft design		solid shaft
Shaft diameter	[mm]	6
Shaft material		steel (1.4104)
Max. shaft load axial (at the shaft end)	[N]	5
Max. shaft load radial (at the shaft end)	[N]	10

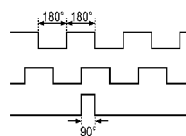
## Electrical connection

Cable: 2 m, PUR; radial, can also be used axially

brown	A
green	0 V A
grey	B
pink	0 V B
red	0 index
black	0 V 0 index
brown/green	L+ (Up)
white/green	L- 0 V (Un)
lilac	error inverted
screen	housing

## Diagrams and graphs

Pulse diagram



Direction of rotation clockwise (looking at the shaft)