



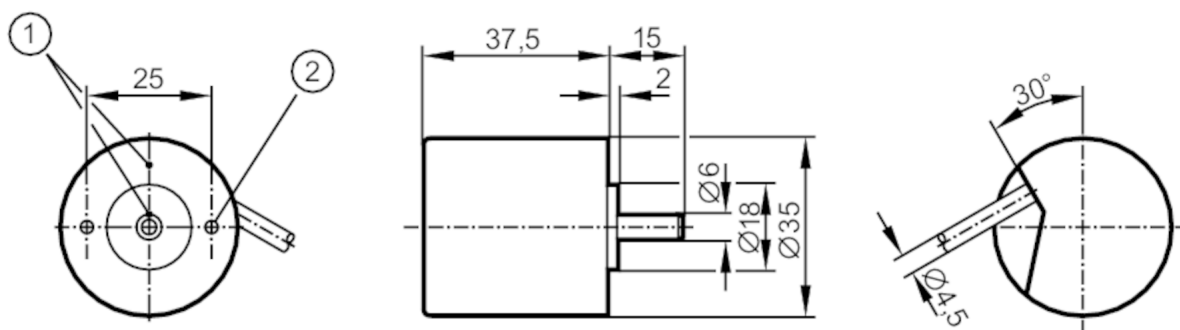
Incremental encoder with solid shaft

RB-0050-I24/L2

Article no longer available - archive entry

Alternative articles: RB3500

When selecting an alternative article and accessories please note that technical data may differ!



- 1 reference mark
2 M3 Depth 5 mm



Product characteristics

| | |
|---------------------|---------------|
| Resolution | 50 resolution |
| Shaft design | solid shaft |
| Shaft diameter [mm] | 6 |

Application

| | |
|--------------------|-------------|
| Function principle | incremental |
|--------------------|-------------|

Electrical data

| | |
|--------------------------|------------|
| Operating voltage [V] | 10...30 DC |
| Current consumption [mA] | 150 |

Outputs

| | |
|-----------------------------------|--------|
| Electrical design | HTL |
| Max. current load per output [mA] | 50 |
| Switching frequency [kHz] | 160 |
| Type of short-circuit protection | < 60 s |
| Phase difference A und B [°] | 90 |

Measuring/setting range

| | |
|------------|---------------|
| Resolution | 50 resolution |
|------------|---------------|

Operating conditions

| | |
|--------------------------------|---------------------|
| Ambient temperature [°C] | -40...70 |
| Note on ambient temperature | firmly laid cable |
| Max. relative air humidity [%] | 75; (briefly: 95 %) |
| Protection | IP 64 |



Incremental encoder with solid shaft

RB-0050-I24/L2

Tests / approvals

| | |
|----------------------|---------------------|
| Shock resistance | 100 g (6 ms) |
| Vibration resistance | 10 g (55...2000 Hz) |

Mechanical data

| | |
|---|-----------------|
| Weight [g] | 261.4 |
| Dimensions [mm] | Ø 35 / L = 52.5 |
| Material | aluminum |
| Max. revolution, mechanical [U/min] | 10000 |
| Max. starting torque [Nm] | 1 |
| Reference temperature torque [°C] | 20 |
| Shaft design | solid shaft |
| Shaft diameter [mm] | 6 |
| Shaft material | steel (1.4104) |
| Max. shaft load axial (at the shaft end) [N] | 5 |
| Max. shaft load radial (at the shaft end) [N] | 10 |

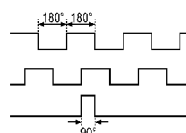
Electrical connection

Cable: 2 m, PUR; radial, can also be used axially

| | |
|-------------|----------------|
| brown | A |
| green | 0 V A |
| grey | B |
| pink | 0 V B |
| red | 0 index |
| black | 0 V 0 index |
| brown/green | L+ (Up) |
| white/green | L- 0 V (Un) |
| lilac | error inverted |
| screen | housing |

Diagrams and graphs

Pulse diagram



Direction of rotation clockwise (looking at the shaft)