

RA6001



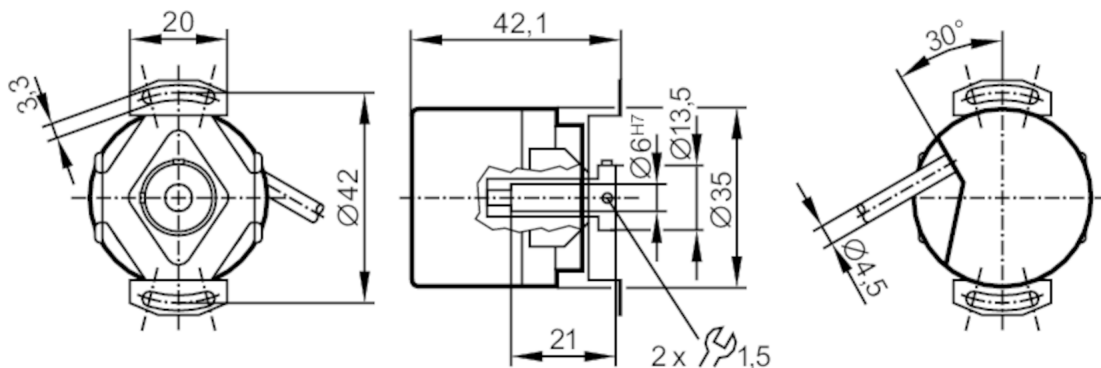
Incremental encoder with hollow shaft

RA-0010-I24/N2

Article no longer available - archive entry

Alternative articles: RA3501 or RA3101 + EVC544

When selecting an alternative article and accessories please note that technical data may differ!



Product characteristics

Resolution	10 resolution
Shaft design	hollow shaft open to one side
Shaft diameter [mm]	6

Application

Function principle	incremental
--------------------	-------------

Electrical data

Operating voltage [V]	10...30 DC
Current consumption [mA]	150

Outputs

Electrical design	HTL
Max. current load per output [mA]	50
Switching frequency [kHz]	160
Type of short-circuit protection	< 60 s
Phase difference A und B [°]	90

Measuring/setting range

Resolution	10 resolution
------------	---------------

Operating conditions

Ambient temperature [°C]	-40...70
Note on ambient temperature	firmly laid cable
Max. relative air humidity [%]	75; (briefly: 95 %)
Protection	IP 64

Tests / approvals

Shock resistance	100 g (6 ms)
Vibration resistance	10 g (55...2000 Hz)

RA6001



Incremental encoder with hollow shaft

RA-0010-I24/N2

Mechanical data		
Weight	[g]	309.3
Dimensions	[mm]	Ø 35 / L = 42.1
Material		aluminum
Max. revolution, mechanical	[U/min]	10000
Max. starting torque	[Nm]	2.5
Reference temperature torque	[°C]	20
Shaft design		hollow shaft open to one side
Shaft diameter	[mm]	6
Shaft fit		H7
Shaft material		steel (1.4104)
Installation depth/shaft	[mm]	6...21
Max. axial shaft misalignment	[mm]	0,5

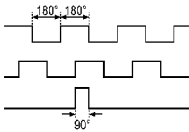
Electrical connection

Cable: 2 m, PUR; radial, can also be used axially

brown	A
green	0 V A
grey	B
pink	0 V B
red	0 index
black	0 V 0 index
brown/green	L+ (Up)
white/green	L- 0 V (Un)
lilac	error inverted
screen	housing

Diagrams and graphs

Pulse diagram



Direction of rotation clockwise (looking at the shaft)