

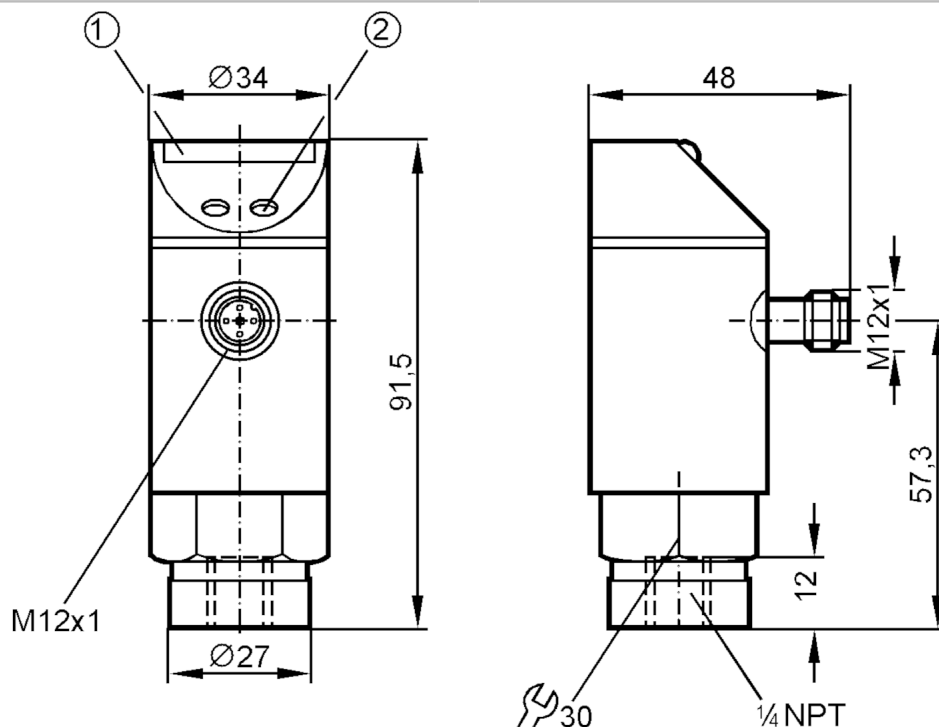
# PZ9974



## Pressure sensor with LED bar display

PZ-010PSBN14-HFPKG/US/.../V

Article no longer available - archive entry



- 1 LED display
- 2 Programming button



### Product characteristics

Number of inputs and outputs	Number of digital outputs: 1
Measuring range [psi]	0...100
Process connection	threaded connection 1/4" NPT external thread

### Application

System	gold-plated contacts
Application	for industrial applications
Media	liquids and gases
Medium temperature [°C]	-25...80
Min. bursting pressure [psi]	2000
Pressure rating [psi]	700
Type of pressure	relative pressure

### Electrical data

Operating voltage [V]	18...30 DC
Current consumption [mA]	50
Min. insulation resistance [MΩ]	100; (500 V DC)
Protection class	III
Reverse polarity protection	yes
Power-on delay time [s]	0.2
Integrated watchdog	yes



## Pressure sensor with LED bar display

PZ-010PSBN14-HFPKG/US/.../V

Inputs / outputs		
Number of inputs and outputs		Number of digital outputs: 1
Outputs		
Total number of outputs		1
Output signal		switching signal
Electrical design		PNP
Number of digital outputs		1
Output function		normally open / closed; (configurable)
Max. voltage drop switching output DC	[V]	2
Permanent current rating of switching output DC	[mA]	250
Switching frequency DC	[Hz]	10
Short-circuit protection		yes
Type of short-circuit protection		yes (non-latching)
Overload protection		yes
Measuring/setting range		
Measuring range	[psi]	0...100
Set point SP	[psi]	5...100
Reset point rP	[psi]	3...98
In steps of	[psi]	1
Note on hysteresis		adjustable
Accuracy / deviations		
Switch point accuracy	[% of the final value]	< ± 2,0
Repeatability		< ± 0,25; (with temperature fluctuations < 10 K)
Temperature drift per 10 K		< ± 0.5
Software / programming		
Adjustment of the switch point		Programming button
Operating conditions		
Ambient temperature	[°C]	-25...80
Storage temperature	[°C]	-40...100
Protection		IP 67
Tests / approvals		
EMC	EN 61000-4-2 ESD	4 kV CD / 8 kV AD
	EN 61000-4-3 HF radiated	10 V/m
	EN 61000-4-4 Burst	2 kV
	EN 61000-4-6 HF conducted	10 V
Shock resistance		DIN IEC 68-2-27 50 g (11 ms)
Vibration resistance		DIN IEC 68-2-6 20 g (10...2000 Hz)
Mechanical data		
Material		EPDM/X; FKM; NBR; PA; PBT; PC; PTFE; stainless steel (1.4301 / 304)

PZ9974



Pressure sensor with LED bar display

PZ-010PSBN14-HFPKG/US/.../V

Materials (wetted parts)	FKM; ceramics; stainless steel (1.4305 / 303)
Min. pressure cycles	100 million
Process connection	threaded connection 1/4" NPT external thread

Displays / operating elements

Display	Switching status	LED, yellow
	Measured values	10 x LED, green Resolution 10 % of the final value

Remarks

Pack quantity	1 pcs.
---------------	--------

Electrical connection

Connector: 1 x M12; coding: A; Contacts: gold-plated

