

# PN8322

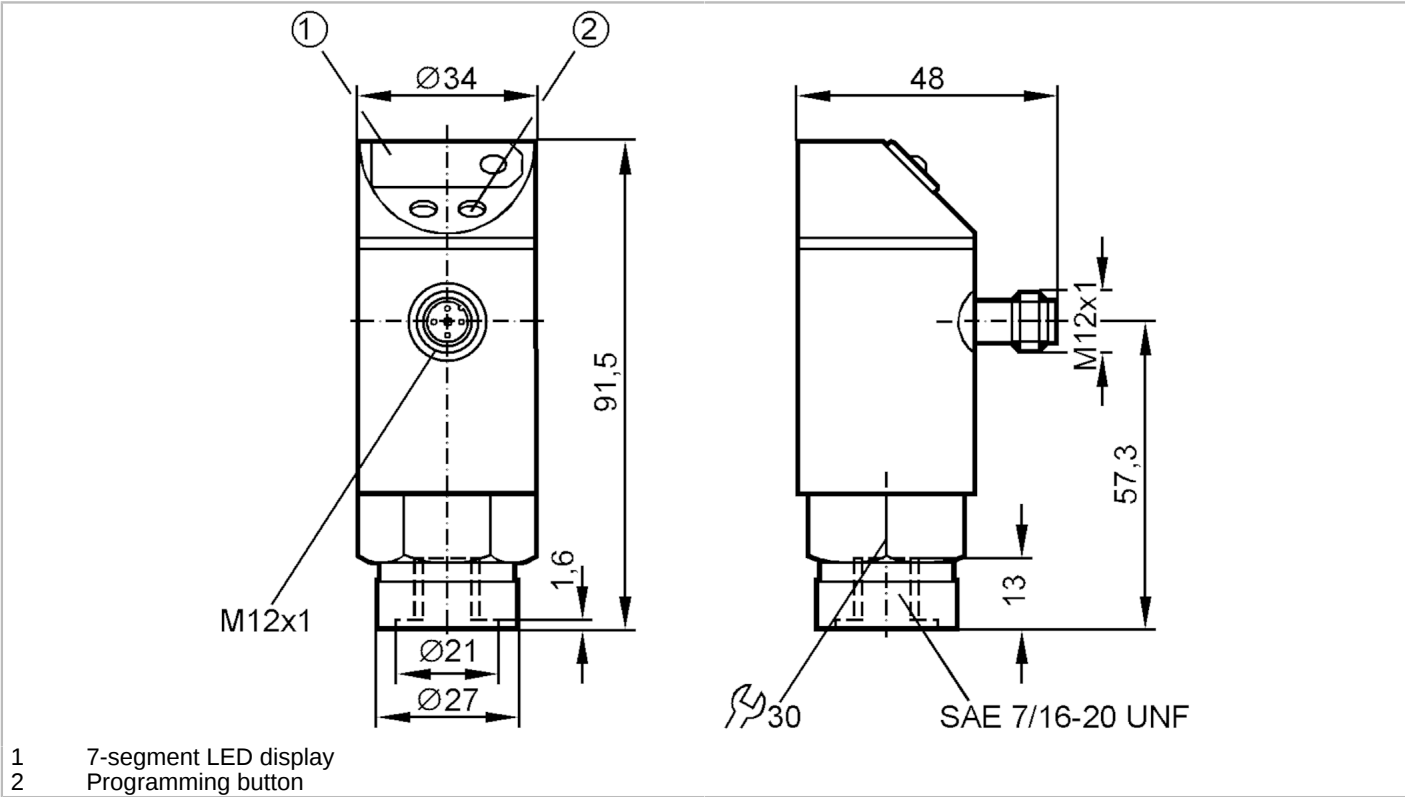


## Pressure sensor with display

PN-100PSBU76-KFPKG/US/ IV

Article no longer available - archive entry

Alternative articles: PN3002 + E30087  
When selecting an alternative article and accessories please note that technical data may differ!



Product characteristics	
Number of inputs and outputs	Number of digital outputs: 1; Number of analog outputs: 1
Measuring range [psi]	0...1000
Process connection	threaded connection 7/16" - 20 UNF Internal thread
Application	
Application	for industrial applications
Media	liquids and gases
Conditionally suitable for	For gaseous media the application is limited to max. 25 bar.
Medium temperature [°C]	-25...80
Min. bursting pressure [psi]	9000
Pressure rating [psi]	4500
Type of pressure	relative pressure
Electrical data	
Operating voltage [V]	20...30 DC
Current consumption [mA]	< 60
Reverse polarity protection	yes
Inputs / outputs	
Number of inputs and outputs	Number of digital outputs: 1; Number of analog outputs: 1



## Pressure sensor with display

PN-100PSBU76-KFPKG/US/ IV

Outputs									
Total number of outputs		2							
Output signal		switching signal; analog signal; (configurable)							
Electrical design		PNP							
Number of digital outputs		1							
Max. voltage drop switching output DC	[V]	2							
Permanent current rating of switching output DC	[mA]	250							
Number of analog outputs		1							
Analog current output	[mA]	4...20							
Max. load	[Ω]	500							
Short-circuit protection		yes							
Type of short-circuit protection		yes (non-latching)							
Overload protection		yes							
Measuring/setting range									
Measuring range	[psi]	0...1000							
Set point SP	[psi]	50...1000							
Reset point rP	[psi]	30...980							
In steps of	[psi]	10							
Accuracy / deviations									
Switch point accuracy	[% of the final value]	< ± 2,0							
Repeatability	[% of the final value]	< ± 0,25; (with temperature fluctuations < 10 K)							
Characteristics deviation	[% of the final value]	< ± 2,0							
Temperature drift per 10 K		< ± 0.3							
Reaction times									
Switching frequency for a given set response time of one output	Response[ms] time (dAP)	15	20	30	50	90	170	330	
	Switching [Hz] frequency	50	35	30	20	15	9	5	
Response time	[ms]	at rectangular pressure characteristic; Set point (SPx) = 70 %; Reset point (rPx) = 30 %							
Delay time programmable dS, dr	[s]	0, 0,2, 0,4,...3							
Software / programming									
Adjustment of the switch point		Programming button							
Operating conditions									
Ambient temperature	[°C]	-25...80							
Storage temperature	[°C]	-40...100							
Protection		IP 67							

PN8322



Pressure sensor with display

PN-100PSBU76-KFPKG/US/ IV

Tests / approvals		
EMC	IEC 801/2 ESD	4 kV CD / 8 kV AD
	IEC 801/3 HF	10 V/m
	IEC 801/4 Burst	2 kV

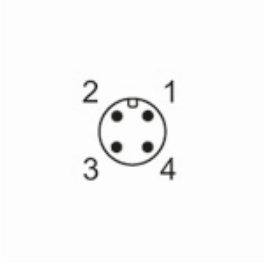
Mechanical data	
Material	brass nickel-plated; PBT; PC; PA
Materials (wetted parts)	brass nickel-plated; ceramics; FKM; NBR; EPDM/X
Min. pressure cycles	100 million
Process connection	threaded connection 7/16" - 20 UNF Internal thread

Displays / operating elements		
Display	Switching status	LED, red
	Function display	7-segment LED display
	Measured values	7-segment LED display

Remarks	
Pack quantity	1 pcs.

Electrical connection

Connector: 1 x M12; coding: A



Connection

