

PN8224

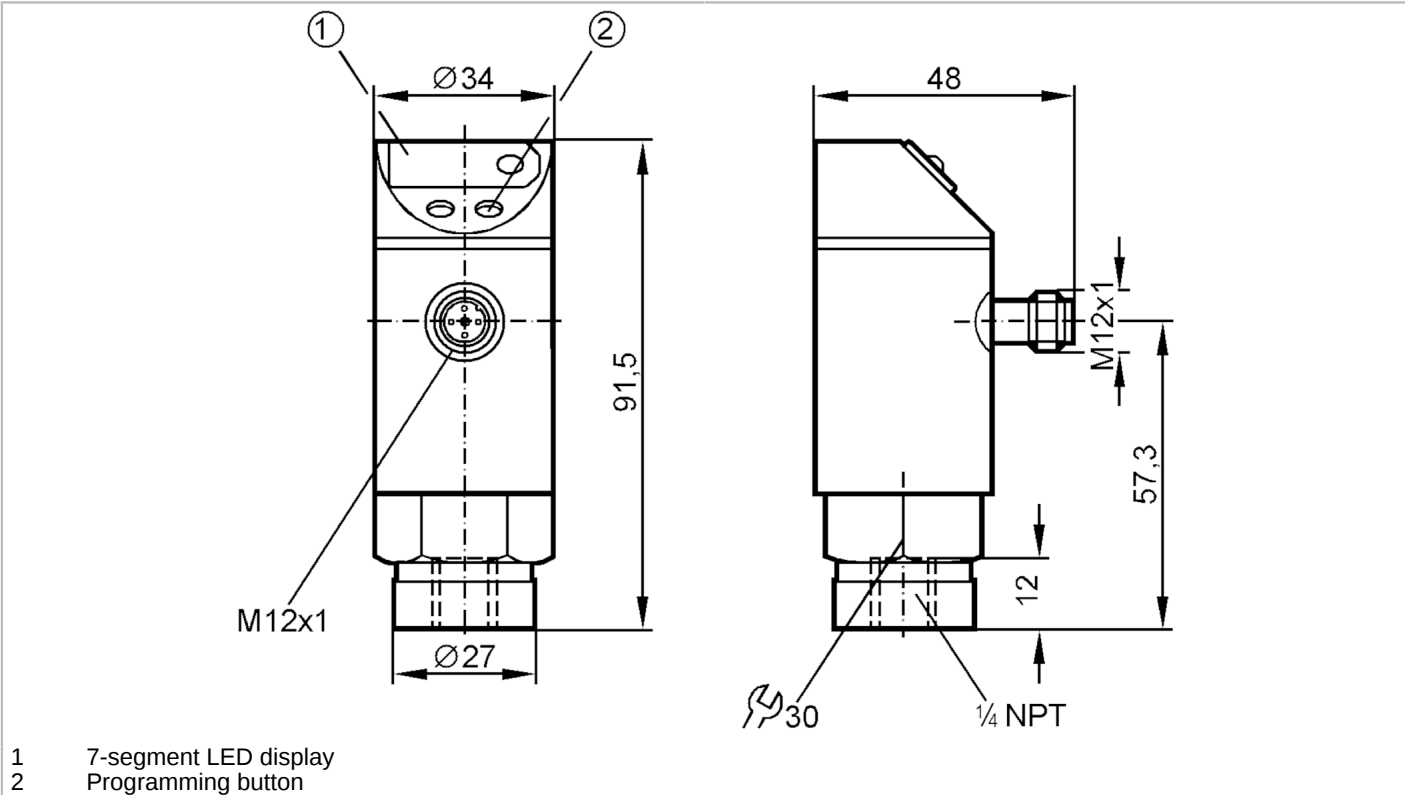


Pressure sensor with display

PN-015PRBN14-KFPKG/US/ IV

Article no longer available - archive entry

Alternative articles: PN2224
When selecting an alternative article and accessories please note that technical data may differ!



Product characteristics	
Number of inputs and outputs	Number of digital outputs: 1; Number of analog outputs: 1
Measuring range [psi]	0...150
Process connection	threaded connection 1/4" NPT external thread
Application	
Application	for industrial applications
Media	liquids and gases
Medium temperature [°C]	-25...80
Min. bursting pressure [psi]	2000
Pressure rating [psi]	700
Electrical data	
Operating voltage [V]	20...30 DC
Current consumption [mA]	< 60
Reverse polarity protection	yes
Inputs / outputs	
Number of inputs and outputs	Number of digital outputs: 1; Number of analog outputs: 1
Outputs	
Total number of outputs	2



Pressure sensor with display

PN-015PRBN14-KFPKG/US/ IV

Output signal	switching signal; analog signal; (configurable)	
Electrical design	PNP	
Number of digital outputs	1	
Max. voltage drop switching output DC [V]	2	
Permanent current rating of switching output DC [mA]	250	
Number of analog outputs	1	
Analog current output [mA]	4...20	
Max. load [Ω]	500	
Short-circuit protection	yes	
Type of short-circuit protection	yes (non-latching)	
Overload protection	yes	

Measuring/setting range

Measuring range [psi]	0...150
Set point SP [psi]	7.5...150
Reset point rP [psi]	4.5...145
In steps of [psi]	1.5

Accuracy / deviations

Switch point accuracy [% of the final value]	< ± 2,0
Repeatability [% of the final value]	< ± 0,25; (with temperature fluctuations < 10 K)
Characteristics deviation [% of the final value]	< ± 2,0
Temperature drift per 10 K	< ± 0.3

Reaction times

Switching frequency for a given set response time of one output	Response[ms] time (dAP)	15	20	30	50	90	170	330
	Switching [Hz] frequency	50	35	30	20	15	9	5
Response time [ms]	at rectangular pressure characteristic; Set point (SPx) = 70 %; Reset point (rPx) = 30 %							
Delay time programmable dS, dr [s]	0, 0,2, 0,4,...3							

Software / programming

Adjustment of the switch point	Programming button
--------------------------------	--------------------

Operating conditions

Ambient temperature [°C]	-25...80
Storage temperature [°C]	-40...100
Protection	IP 65

Tests / approvals

EMC	IEC 801/2 ESD	4 kV CD / 8 kV AD
	IEC 801/3 HF	10 V/m
	IEC 801/4 Burst	2 kV

PN8224



Pressure sensor with display

PN-015PRBN14-KFPKG/US/ IV

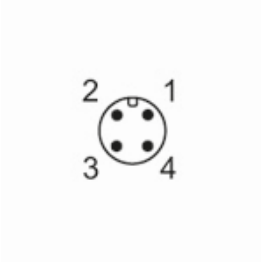
Mechanical data		
Material	brass nickel-plated; PBT; PC; PA	
Materials (wetted parts)	brass nickel-plated; ceramics; FKM; NBR; EPDM/X	
Min. pressure cycles	100 million	
Process connection	threaded connection 1/4" NPT external thread	

Displays / operating elements		
Display	Switching status	LED, red
	Function display	7-segment LED display
	Measured values	7-segment LED display

Remarks		
Pack quantity	1 pcs.	

Electrical connection

Connector: 1 x M12; coding: A



Connection

